

Annual Report 2016 on Public Sector Energy Efficiency Performance

An SEAI Report prepared for the Department of Communications, Climate Action & Environment



Contents

1. Executive Summary	2
2. Background and Context	4
2.1 Policy and Legislative Requirements	4
2.2 The Monitoring and Reporting (M&R) Process	5
2.3 Transition to Irish Water	5
2.4 Analysis of Reporting by Public Bodies	6
3. Analysis of Primary Energy Consumption and Energy Spend	7
3.1 Total Energy Consumption	7
3.2 Total Energy Spend	7
3.3 Total Energy Consumption by Fuel Type	8
3.4 Electricity Consumption	9
3.5 Natural Gas Consumption	10
3.6 Main Energy Consumers	10
4. Analysis of Energy Savings Achieved and Performance	11
4.1 Total Public Sector Primary Energy Savings (GWh) and Performance	11
4.2 Analysis of Total and Cumulative Public Sector Energy Savings (€)	13
4.3 Sub-sector Primary Energy Savings (GWh)	13
Making Progress	14
5. Towards 2020	16
5.1 Sub-sectoral Performance	16
5.2 Performance of Public Bodies	18
Appendix 1 – Reporting Methodology	42
Appendix 2 – Glossary	44

1. Executive Summary

This is the third annual report on the energy efficiency performance of public bodies in Ireland. It is set in the context of Ireland's EU and national commitments and wider climate change goals, whereby a target of 33% energy efficiency improvement is to be achieved by all Irish public bodies by 2020.

Energy efficiency continues to be a national imperative driven by the multiple challenges of the need for security of energy supply, dealing with fluctuating energy costs and addressing global climate change. The 2015 energy white paper, *Ireland's Transition to a Low Carbon Energy Future*, emphasised how energy efficiency will be at the centre of a transition to a clean, low carbon energy system by 2050.

Public bodies are required to report annual energy efficiency data to the Sustainable Energy Authority of Ireland (SEAI) which manages the reporting process on behalf of the Department of Communications, Climate Action and Environment¹ (DCCAE). The definition of 'public bodies' in Ireland is broad and includes the civil service, local authorities, non-commercial state bodies/agencies, commercial state bodies, public health, justice and defence and educational bodies.

Approximately 96% of all public bodies are now using the online national energy monitoring and reporting (M&R) system established by SEAI and DCCAE, in addition to half of

all schools. The monitoring and reporting system provides an important record of how the public sector performed in 2015.

The key findings for 2015 show overall improvements, for the second year running, in both the numbers of public bodies reporting and the total energy efficiencies achieved. The detailed data in this report for 2015 cannot, however, be compared on a like for like basis to the data for 2014 as the overall number of public bodies and schools reporting has increased significantly.

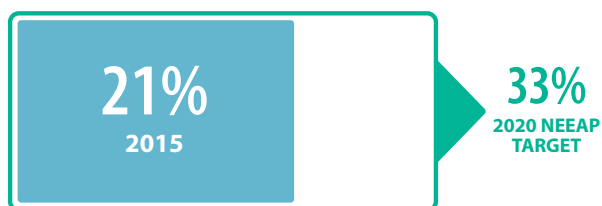
- For 2015, 350 public bodies were requested to report data to SEAI, of which 337² submitted complete reports by the reporting deadline.
- In addition, 3,732 standalone schools were requested to report data, of which 1,792³ submitted complete reports.

This report comprises an analysis of the data submitted by these organisations on annual energy consumption, annual energy spend, energy savings achieved and energy efficiency performance in 2015 against 2020 targets.

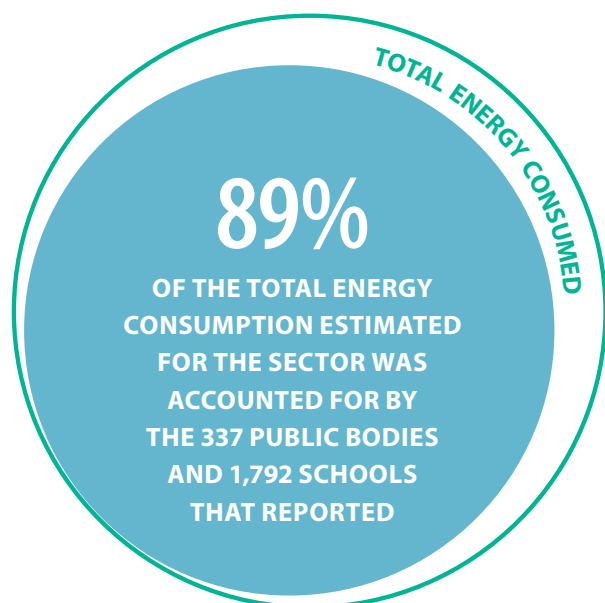
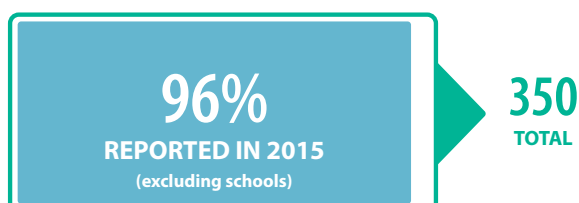
Efficiency gains have been achieved through implementation of thousands of diverse projects, ranging from structured energy management, building and facility upgrades, retrofits, changes in transportation, better energy procurement and through behavioural change in organisations.

Current Position

ENERGY EFFICIENCY IMPROVEMENT



PUBLIC BODY REPORTING RATE



¹ Reporting by public bodies in Ireland is required under Regulation 5(4) of SI 426 2014. The number of public bodies that are required to report may change each year due to organisational changes in line with government policy and legislation.

² 345 public bodies attempted to submit reports but data for some of these was incomplete and is not included in this report.

³ An additional 121 schools attempted to submit reports but their data was incomplete and is not included in this report.

Key findings from the analysis of the data reported by 337 public bodies and 1,792 schools for 2015:

- Their combined total primary energy consumption was 9,343 GWh and their total energy spend was €588 million.
- This is estimated to represent 89% of the energy consumption of the sector.
- Annual primary energy savings of 2,442 GWh were achieved, which is equivalent to 548,000 tonnes of CO₂ savings.
- These savings amount to a 21% improvement on business as usual, representing €154 million in cost savings for the sector in 2015.

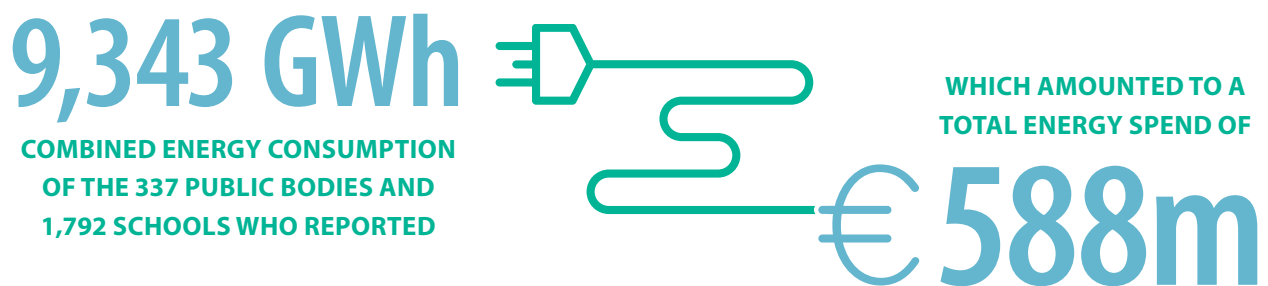
While the level of reporting by public sector organisations is very strong in terms of compliance from the sector, the aim is that all public bodies' consumption, including that of all schools, will be reported in future years. The compliance rate in 2015 for public bodies was 96%, excluding schools. The compliance rate for schools of 48% is almost twice that of last year. It is considered a good response given the technical complexity of the data requirements.

Overall, the energy performance reported is strong, at 21% improvement by 2015. However there are still significant challenges ahead for public bodies to maintain this course of action and sustain continuous improvements in energy efficiency to meet the 2020 targets. The annual M&R process is an enabling tool, providing public bodies with information that enables strategic decision-making towards the 2020 target.

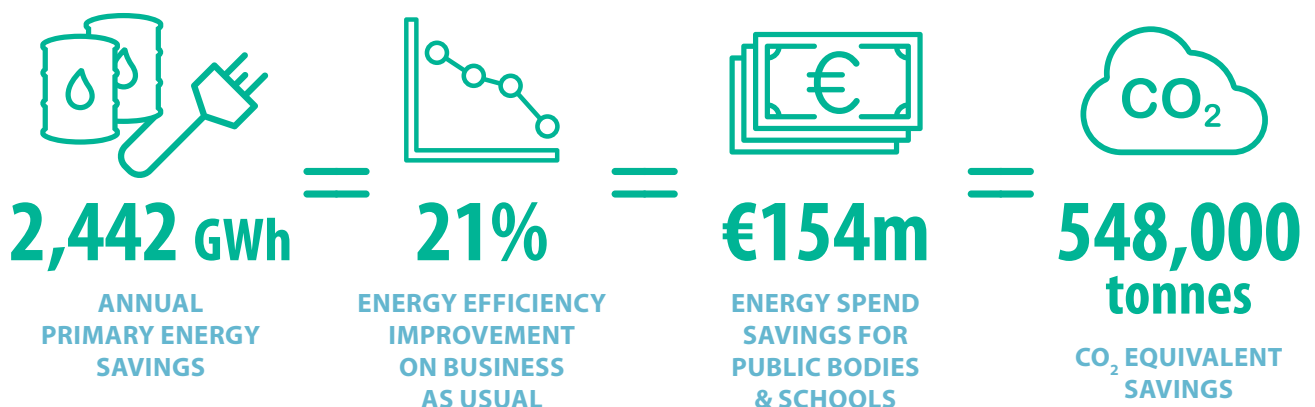
In 2015, improvements were made in both the numbers of bodies reporting and the total energy efficiencies achieved

In 2015, public bodies avoided energy use equating to €154 million

Key Findings



FOR 2015, THE SAVINGS ACHIEVED WERE:



2. Background and Context

2.1 Policy and Legislative Requirements

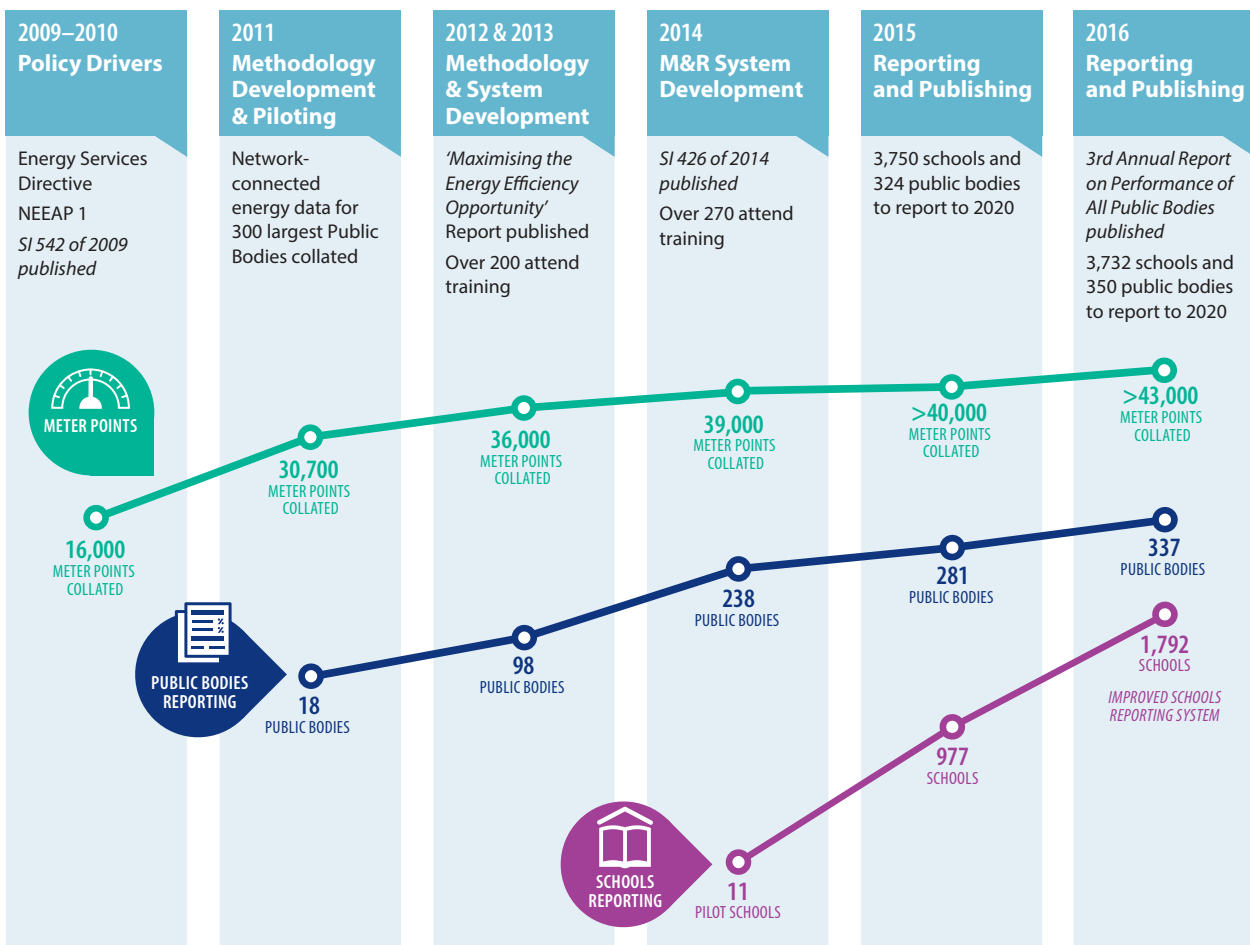
The *Energy Efficiency Directive (EED) (2012/27/EU)*⁴ sets out the policy roadmap for the period to 2020 and brings forward legally binding measures to intensify Member States' efforts to use energy more efficiently at all stages of the energy supply chain. The EU 2030 Climate and Energy Framework sets out headline targets for the EU for 2030 of at least a 40% reduction in greenhouse gas emissions (from 1990 levels) and increases in energy efficiency and renewable energy to 27%.

In Ireland, the National Energy Efficiency Action Plan (NEEAP) sets out several obligations on public bodies to lead the way in relation to energy efficiency, stating *'The public sector will improve its energy efficiency by 33% and will be seen to lead by example — showing all sectors what is possible through strong, committed action'*.

SEAI, on behalf of DCCA, established the M&R system to enable public bodies to track their energy efficiency performance towards the 2020 targets.

This M&R system is based on the groundwork put in place since 2009 by SEAI to enable the public sector to meet their energy efficiency reporting requirements. This is illustrated in Figure 1.

FIG. 1: ENABLING M&R BY PUBLIC BODIES



⁴ This has been transposed into Irish legislation under SI 426 of 2014 European Union (Energy Efficiency) Regulations.

2.2 The Monitoring and Reporting (M&R) Process

Since 2010, public bodies have been required by Irish statute to report on their energy usage and actions taken to reduce consumption. There are two key obligations for public bodies:

- Requirement to report energy management and performance data directly to SEAI each year in order to track progress towards the 2020 target;
- Requirement to publish an annual statement on energy performance. This statement must describe “the actions it is taking, or has taken, to improve its energy efficiency and an assessment of the energy savings arising from those actions”.

The reporting methodology is illustrated below in Figure 2. A more detailed description is in Appendix 1.

There are two key concepts applied:

- Application of activity metrics so that fluctuations in an organisation’s level of activity that have an impact on energy **consumption** are taken into account in determining performance, and
- Tracking energy performance and energy efficiency against a **baseline** so annual improvements can be assessed.

Energy efficiency improvements therefore can be assessed against a ‘business as usual’ scenario, and take into account organisational or infrastructural changes that impact on the energy requirements of the public body.

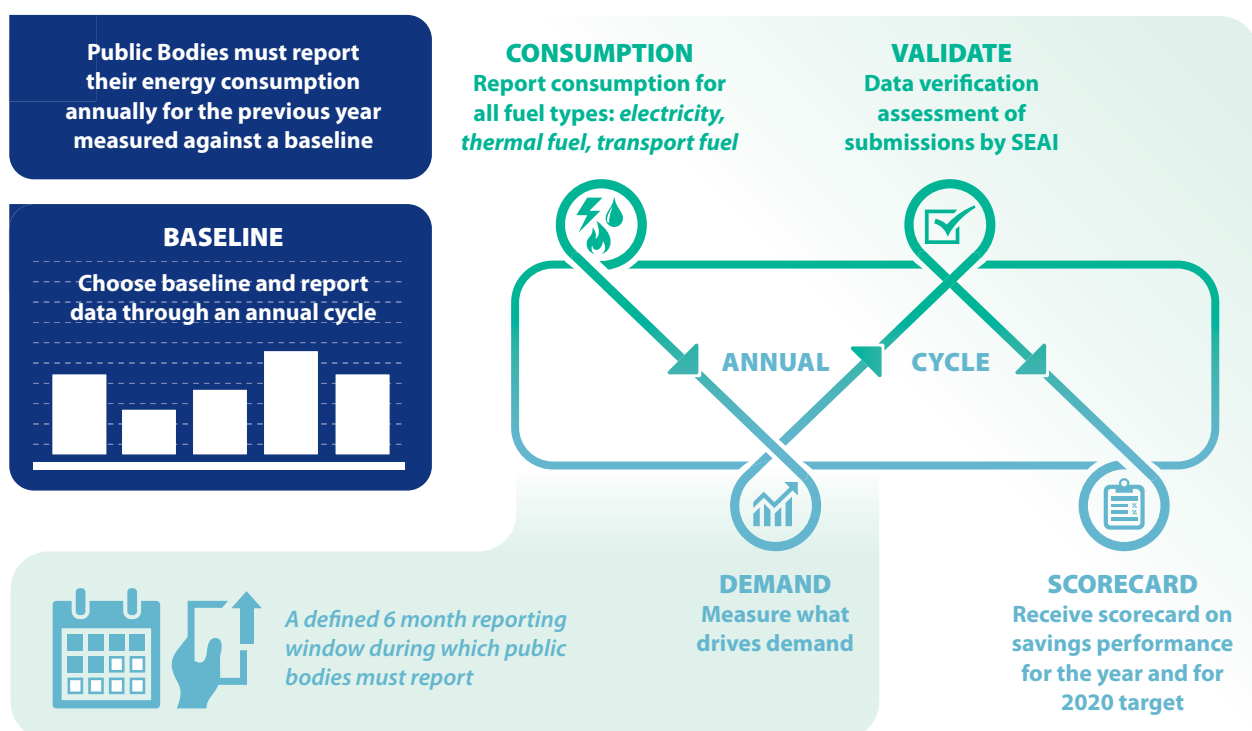
2.3 Transition to Irish Water

Up to the end of 2013, local authorities were responsible for the provision of public water services, which accounted for approximately 40% of their combined energy consumption. In January 2014, the water services assets transferred to Irish Water. In consultation with local authorities and Irish Water, SEAI developed an approach to track the energy performance of the sector before, during and after this transition. The key elements of this approach are:

- All savings made by local authorities arising from water services up to the end of 2013 have been ‘locked in’ and will be retained by local authorities for the purposes of tracking their progress against the 2020 target.
- The water services sector must improve its energy performance by 33% by 2020. The sector had made savings of 6% (provisional) up to and including 2013.

Data for local authorities and Irish Water is included within the same sub-sector breakdown in this report.

FIG. 2: HOW PUBLIC BODIES REPORT



2.4 Analysis of Reporting by Public Bodies

In Ireland the definition of 'public bodies' is broad and encompasses a wide range of organisations, including the civil service, local authorities, non-commercial state bodies/agencies, commercial state bodies, public health, justice and defence and educational bodies.

In 2015 **350⁵ public bodies and 3,732 standalone schools** were requested to report data to SEAI through the 2015 reporting cycle.⁶

The public bodies and schools that were requested to report during the 2015 reporting cycle are broken down as follows:

- 350 public bodies, including 16 Education & Training Boards (ETBs), were requested to report data directly to SEAI using the reporting system. The 270 schools under the aegis of the ETBs were requested to report via their ETBs.
- Another 3,732 schools were requested to report directly as standalone entities.

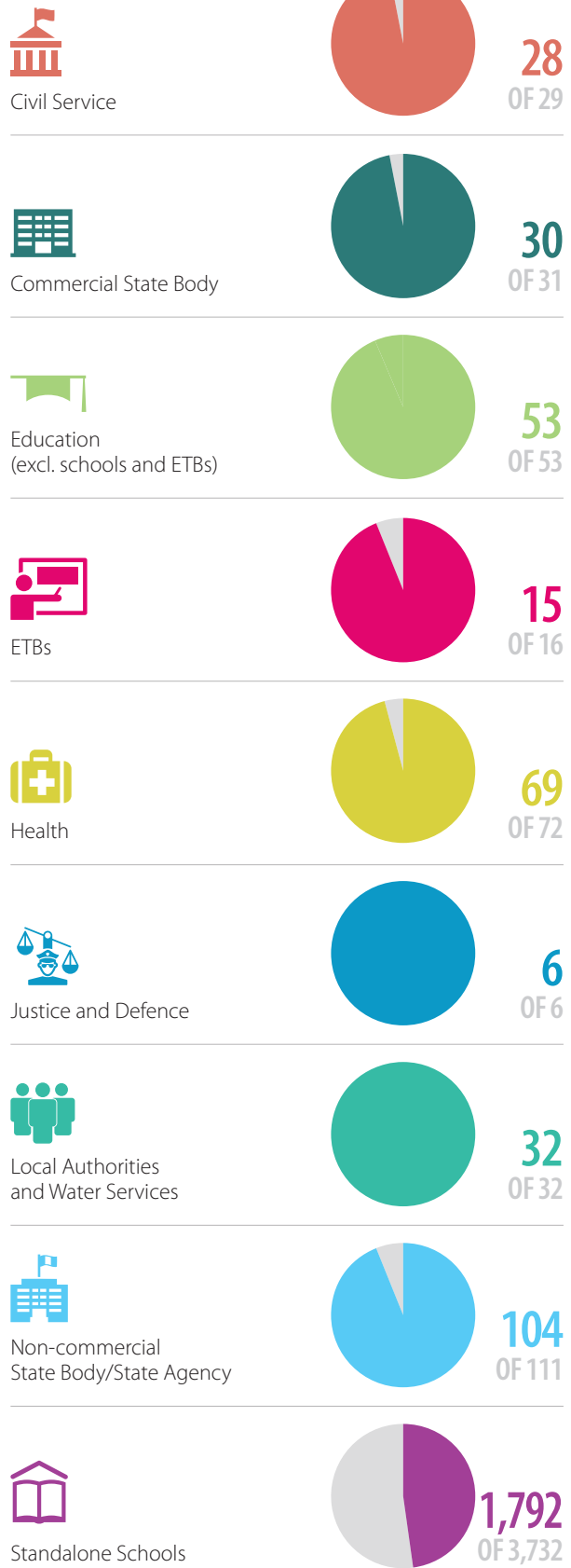
By the reporting deadline, 345⁷ public bodies and 1,913 standalone schools had made submissions to SEAI. Some of these submissions were not fully complete and are not taken into account in the analysis of the data presented in this report. The data presented in this report is an analysis of 337 complete submissions from public bodies and 1,792 from standalone schools.

The 337 complete submissions made by public bodies represents a compliance rate of 96%. SEAI estimates that the consumption of all of the organisations that reported represents over 89% of total public sector energy consumption.

Figure 3 shows the number of complete reports submitted from each sub-sector as a proportion of the total number of organisations in each sub-sector.

The consumption of the organisations that reported represents over 89% of total public sector energy consumption

FIG. 3: BREAKDOWN OF SUBMISSIONS BY SUB-SECTOR



⁵ The number of public bodies that are required to report in Ireland may change each year due to organisational changes in line with government policy and legislation e.g. in 2015 the National Roads Authority and the Railway Procurement Agency merged to become Transport Infrastructure Ireland.

⁶ In addition, a further 10 public bodies and 7 schools were requested to report but were subsequently excused from reporting as standalone entities.

⁷ This figure includes 3rd level institutions and ETBs, but excludes standalone schools.

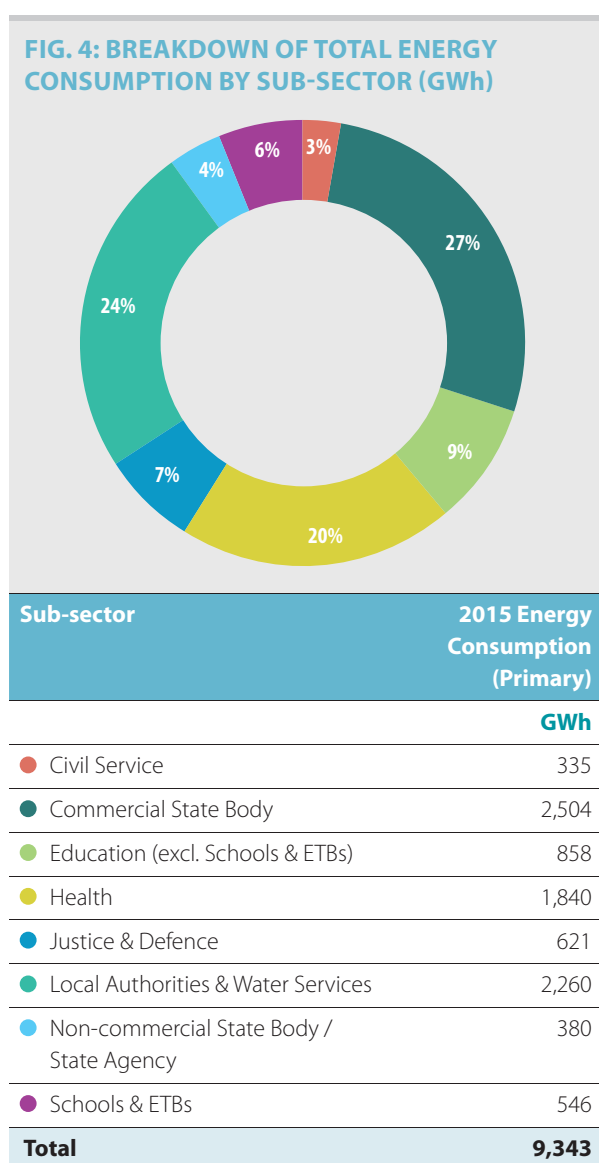
3. Analysis of Primary Energy Consumption and Energy Spend

The data presented in section 3 is based on the complete reports submitted by 337 public bodies and 1,792 schools.⁸

3.1 Total Energy Consumption

The total primary energy consumption reported for 2015 was 9,343 GWh.

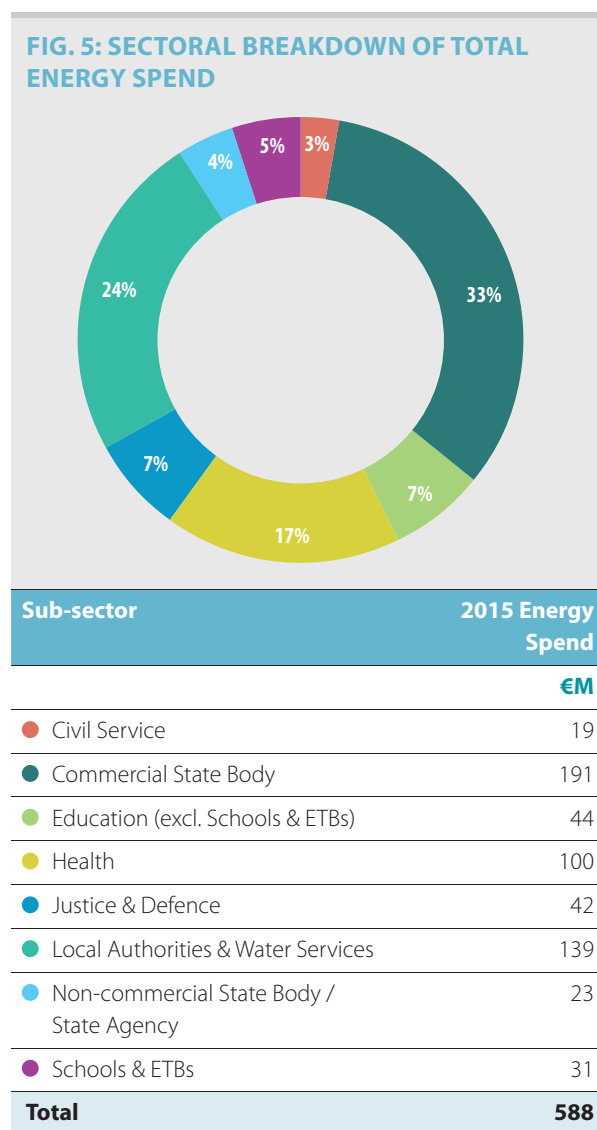
The sectoral breakdown of this total is shown in Figure 4.



3.2 Total Energy Spend

In 2015 the total public sector energy spend was €588 million.

The sectoral breakdown of this total spend is shown in Figure 5.

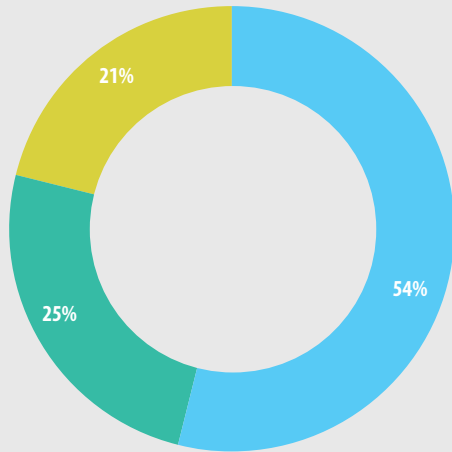


⁸ All of the values presented in this report for energy (GWh), expenditure (€ millions) and CO₂ emissions (tonnes CO₂) have been rounded. There are minor rounding differences in some of the tabular data.

3.3 Total Energy Consumption by Fuel Type

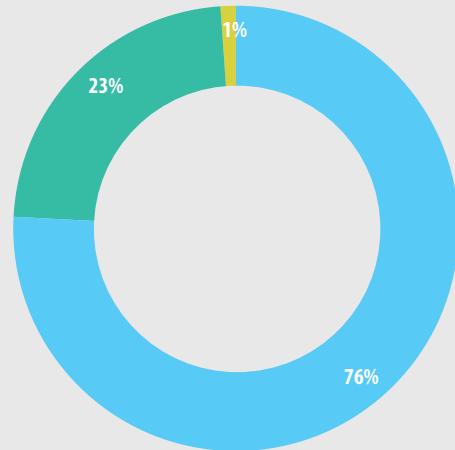
The breakdown of the 9,343 GWh of energy consumption reported for 2015 between electrical, heating (thermal) and transport is illustrated in Figure 6. The thermal and transport subtotals are broken down by fuel type in Figures 6A and 6B.

FIG. 6: CONSUMPTION SPLIT



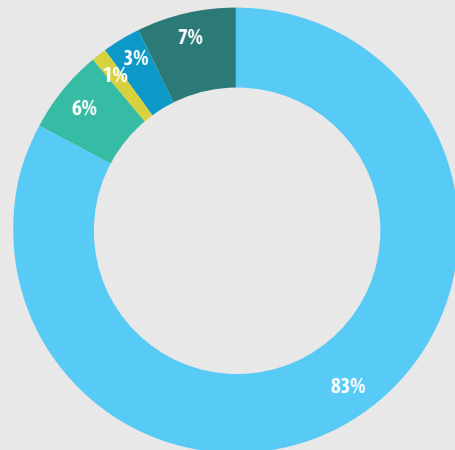
Fuel type	2015 Energy Consumption (Primary)
	GWh
Electricity	5,027
Thermal	2,322
Transport	1,993
Total	9,343

FIG. 6A: THERMAL ENERGY BREAKDOWN



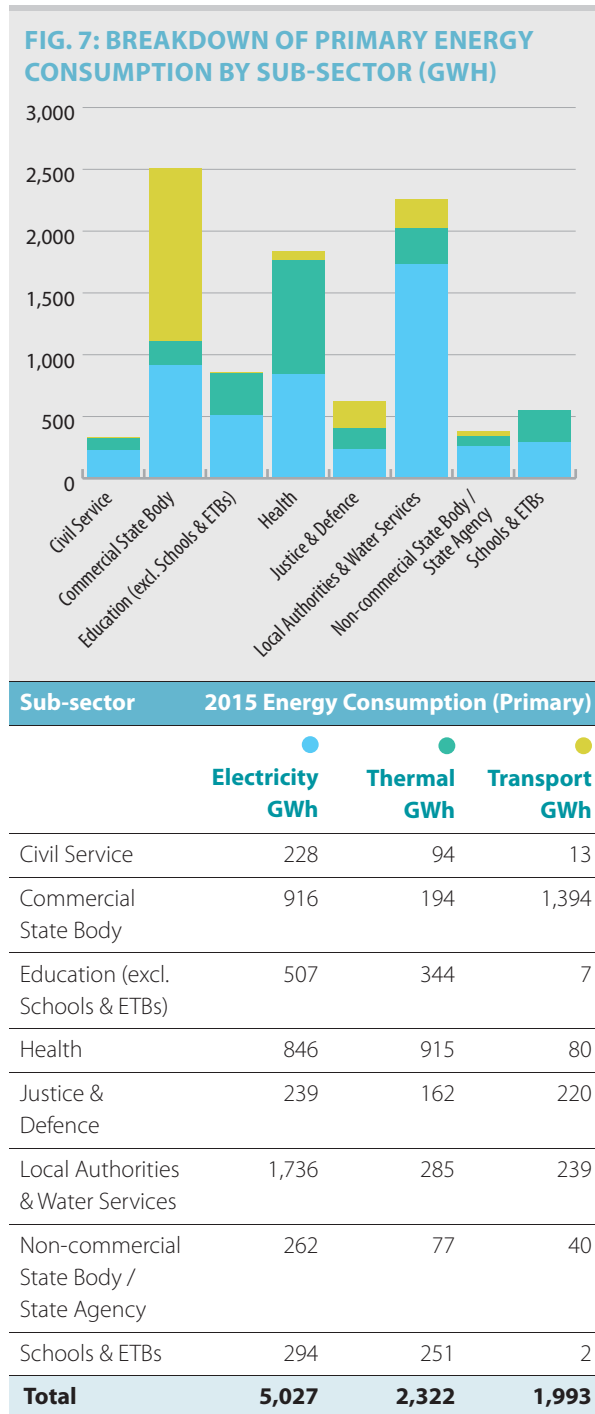
Fuel	2015 Consumption (Primary)
	GWh
Natural Gas, LPG & Biogas	1,763
Heating Oils	531
Wood Fuels	28
Total	2,322

FIG. 6B: TRANSPORT ENERGY BREAKDOWN



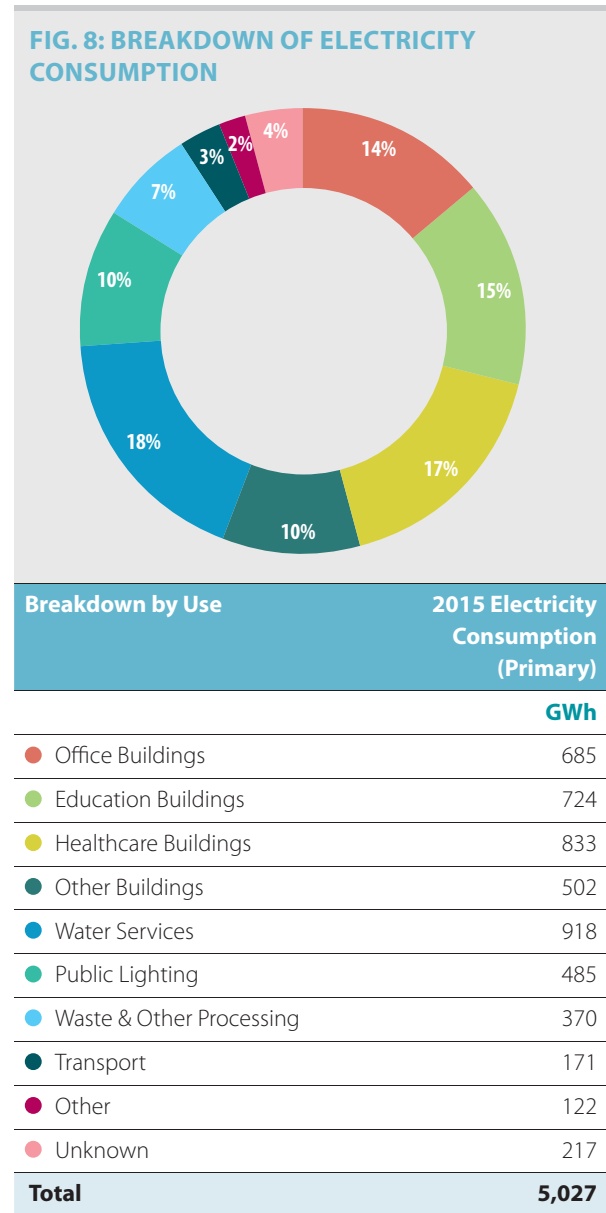
Fuel	2015 Consumption (Primary)
	GWh
Road Diesel	1,653
Marked Diesel (Non-thermal)	120
Petrol	23
Biofuels	62
Other Transport Fuels	135
Total	1,993

The consumption patterns in the sub-sectors are illustrated in Figure 7.



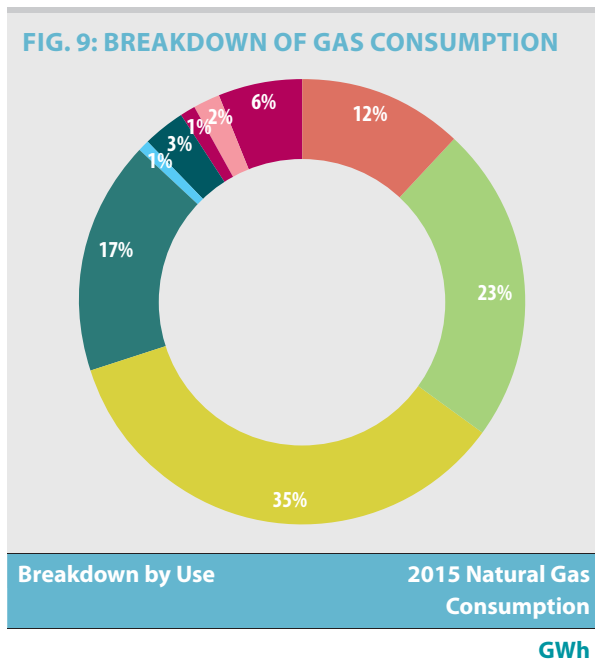
3.4 Electricity Consumption

The total electrical consumption is 5,027 GWh and is broken down in Figure 8.



3.5 Natural Gas Consumption

The total natural gas consumption is 1,676 GWh and is broken down in Figure 9.

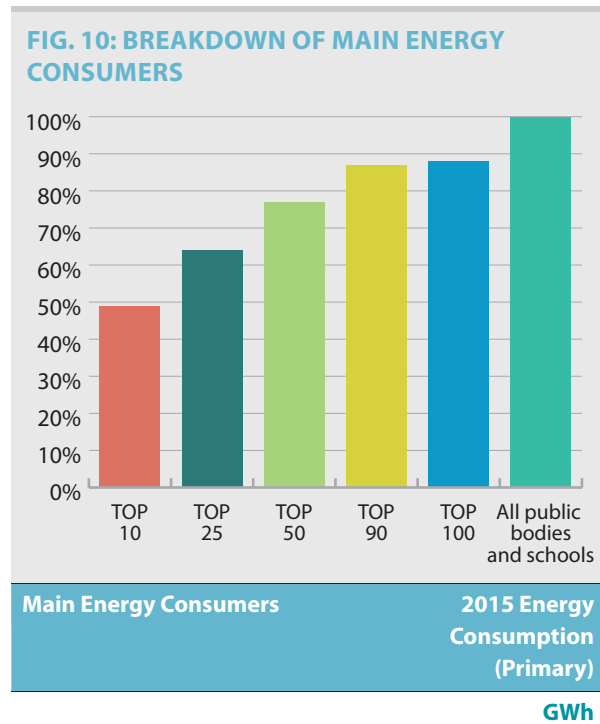


Office Buildings	197
Education Buildings	383
Healthcare Buildings	597
Other Buildings	279
Water Services	11
Waste & Other Processing	49
Electricity Generation	20
Other	44
Unknown	95
Total	1,676

10 public bodies account for 49% of total consumption

3.6 Main Energy Consumers

Altogether, the total primary energy consumption in 2015 of the ten largest energy consumers was 4,596 GWh, which accounts for 49% of total reported consumption. The 100 largest energy consumers that reported account for 88% of the total reported primary energy consumption.



Top 10	4,596
Top 25	6,025
Top 50	7,192
Top 90	8,115
Top 100	8,255
All public bodies and schools	9,343

It is likely that improvements by the top 50 energy consumers (which account for 77% of energy consumption) will largely determine if the 33% target will be met by the sector by 2020.

The 10 largest energy consumers that reported for 2015 are set out in alphabetical order below.

- An Garda Síochána
- An Post
- Bus Éireann
- Coillte Teoranta
- Defence Forces
- Dublin Bus
- Dublin City Council
- HSE
- Iarnród Éireann / Irish Rail
- Irish Water

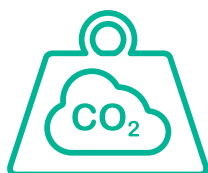
4. Analysis of Energy Savings Achieved and Performance

4.1 Total Public Sector Primary Energy Savings (GWh) and Performance

The combined savings in 2015 of the public bodies and schools that submitted complete reports is 2,442 GWh⁹ of primary energy, as illustrated in Figure 11. This amount is equivalent to a 21% improvement compared to what the business-as-usual energy consumption would have been had these organisations maintained their baseline efficiency levels¹⁰. This is the primary indicator used for tracking the sector's progress towards the 33% target. Based on 2015 data, a 33% improvement would be equivalent to 3,910 GWh of primary energy savings.

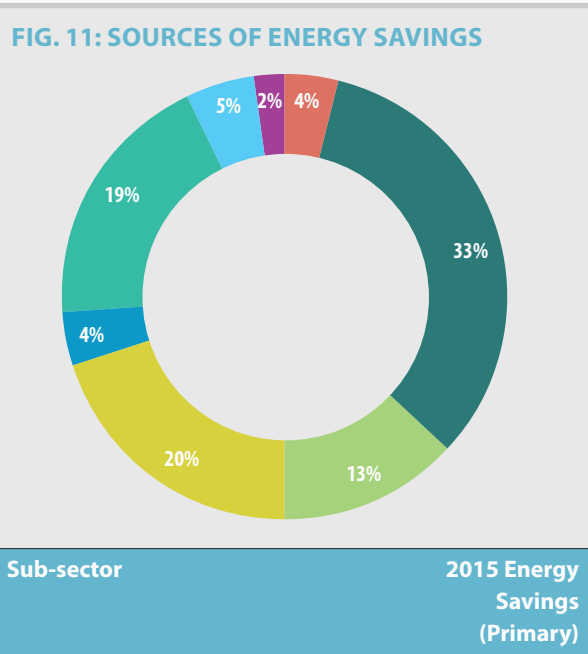
The 2,442 GWh of annual energy savings are equivalent to 548,000 tonnes of annual CO₂ savings.

The cumulative avoided CO₂ emissions (up to 2015) since their baselines reported by the public bodies and schools that submitted complete reports amount to 2,174,000 tonnes.



548,000 tonnes

THE 2,442 GWH OF ANNUAL ENERGY SAVINGS ARE EQUIVALENT TO 548,000 TONNES OF ANNUAL CO₂ SAVINGS



Sub-sector	2015 Energy Savings (Primary) GWh
Civil Service	104
Commercial State Body	799
Education (excl. Schools & ETBs)	318
Health	504
Justice & Defence	89
Local Authorities & Water Services	460
Non-commercial State Body / State Agency	116
Schools & ETBs	52
Total	2,442

⁹ Calculated by subtracting each organisation's actual 2015 energy consumption from its business-as-usual energy consumption. The business-as-usual energy consumption is the amount that each public body would have consumed in 2015 had it not made the reported efficiency gains since its baseline.

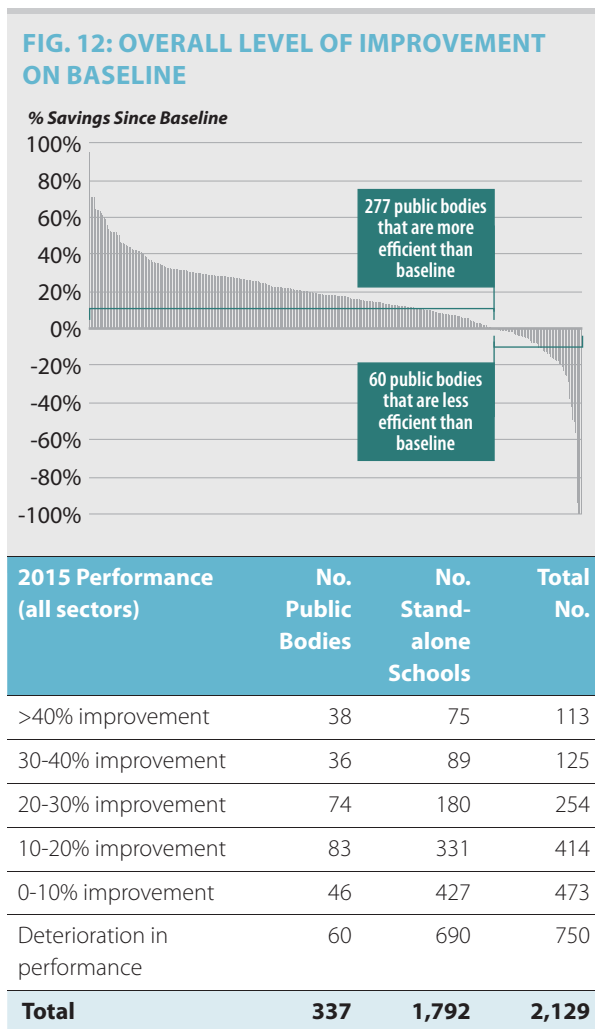
¹⁰ The calculation of these results incorporates adjustments to the business-as-usual consumption for local authorities to account for the transition of water services to Irish Water.

The analysis of the performance of the 337 public bodies (excluding standalone schools) that reported shows that:

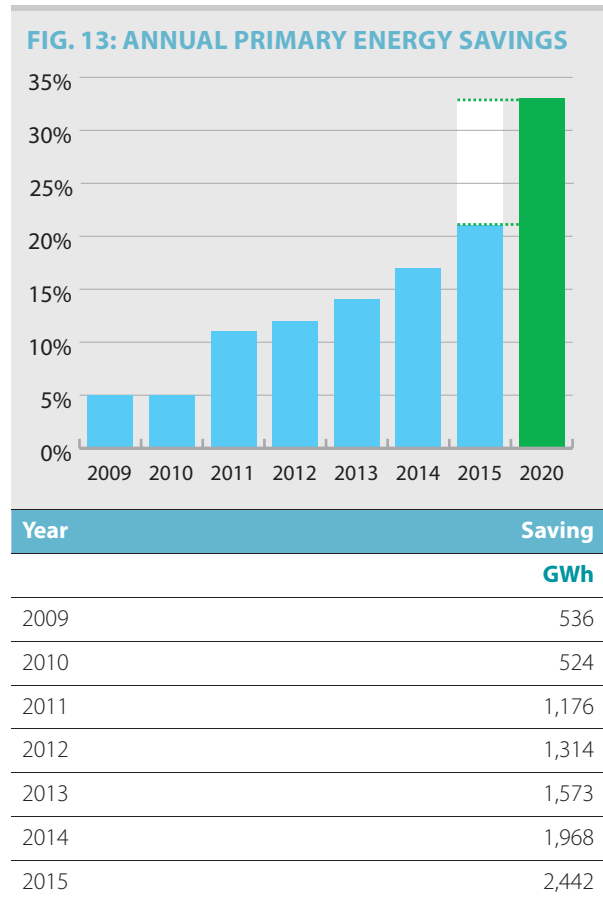
- **48%** are more efficient than their baseline and are on track for their 2020 target. (Aggregate 2015 savings of 1,907 GWh, which is equivalent to 427,000 tonnes of CO₂)
- **34%** are more efficient than their baseline but are not yet on the path to the 2020 target. (Aggregate 2015 savings of 565 GWh, which is equivalent to 128,000 tonnes of CO₂)
- **18%** are less efficient than their baseline. (Aggregate 2015 deterioration in performance of 53 GWh, which is equivalent to 12,000 tonnes of CO₂)

Of the public bodies that reported, **82% have made improvements on their baseline**. Taking both the savings and deteriorations into account, overall improvement for the public bodies is 2,442 GWh. This is equivalent to 548,000 tonnes of CO₂.

The distribution of the performance results is shown in Figure 12.



The graph in Figure 13 tracks how the total savings achieved in each year since 2009 compare to the 2020 target.



In addition to the energy efficiency improvements achieved, the absolute level of energy consumption has also improved over time. The 337 public bodies and 1,792 schools that reported data consumed **1,232 GWh** less primary energy in 2015 than they did in their baselines.

4.2 Analysis of Total and Cumulative Public Sector Energy Savings (€)

The value of the **energy savings** reported for 2015 is **€154 million**. As the total spend in 2015 for all of the organisations that reported data is €588 million, this represents a saving of 26% in energy costs attributable to energy efficiency improvements.

The value of the cumulative energy savings (up to 2015) since their baselines reported by the public bodies and schools that submitted complete reports is **€619 million**.



€154m

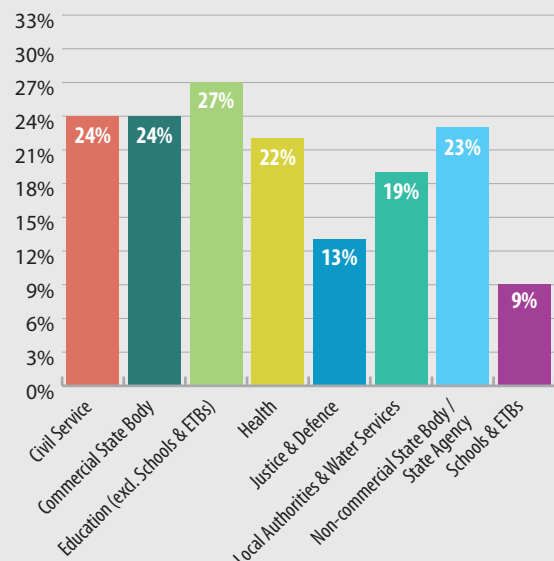
**PUBLIC BODIES, INCLUDING
SCHOOLS, REPORTED
SAVINGS WORTH
€154M IN 2015**

4.3 Sub-sector Primary Energy Savings (GWh)

The breakdown of savings in primary energy (GWh) and percentage improvement on 'business as usual' (BAU) by sub-sector is set out in the table in Figure 14. The equivalent CO₂ savings are also identified.

The bar chart in Figure 14 illustrates percentage savings for each sub-sector.

FIG. 14: SUB SECTOR COMPARISON OF PERFORMANCE TO DATE (PRIMARY ENERGY SAVINGS)



Sub-sector	2015 Energy Savings (Primary) GWh	% Improvement on BAU	CO ₂ Savings (000s)
Civil Service	104	24%	23
Commercial State Body	799	24%	186
Education (excl. Schools and ETBs)	318	27%	69
Health	504	22%	111
Justice & Defence	89	13%	20
Local Authorities & Water Services	460	19%	103
Non-commercial State Body / State Agency	116	23%	25
Schools & ETBs	52	9%	11
Total	2,442	21%	548

BAU: business-as-usual

Making Progress

The reports submitted this year demonstrate energy efficiency improvements achieved through the implementation of thousands of individual efficiency measures as part of an overall drive for energy efficiency by public sector organisations. Over half of the measures reported addressed lighting, heating, building fabric and structured energy management improvements. Other areas targeted were ICT systems, on-site renewables and control optimisation.

The projects illustrated on these pages are a selection of over 2,400 projects and measures that the public sector has reported to SEAI in 2015 and are representative of the diverse range of energy efficiency improvements which have been implemented across the country. While the overall level of project reporting has improved, many of the efficiency measures are individually of a small scale. Organisations will need to become more proactive in both undertaking energy efficiency projects of scale, and reporting on them, so that other public bodies can benefit from their experience.

Note: Case study savings are total final consumption, all other figures in the report are primary energy consumption



1,191,980 kWh

The DAA has completed a deep retrofit of the old Aer Lingus Head Office building, now Dublin Airport Central (DAC) One, at Dublin Airport, designed to LEED Platinum standard. The building has been completely refurbished to exceed building regulations with façade upgrades, new boilers and efficient heating ventilation and air conditioning system selection, which together with a fully integrated BMS, combine to achieve a potential 80% saving over the building's baseline energy consumption.

Dublin Airport Authority (DAA)



63,600 kWh

Letterkenny Institute of Technology has reduced its electrical energy consumption by 63,600 kWh (equivalent to 32 tonnes CO₂) within its data centres on the Letterkenny and Killybegs campuses, through server consolidation with virtualization technology. Virtualizations allow for fewer physical servers, meaning lower power usage and reduced cooling requirements in the data centres. Rationalisation of the servers also facilitated the de-commissioning of a server room.

Letterkenny Institute of Technology



€40,500

In 2015 Galway City Council upgraded a total of 400 street lights to best available technology LEDs. This project included the replacement of all mercury lamps and all other 400 W and 600 W lamps on the city network, together with the commencement of upgrades on a cluster basis. The project has resulted in annual energy savings of 253,000 kWh, equivalent to 124 tonnes of CO₂ and has reduced the City Council's annual electricity costs by €40,500.

Galway City Council





28%



The Office of the Director of Corporate Enforcement is the lead tenant in a 15-year-old, five-storey-over-basement office building. Together with four other tenants, it established a Green Team in 2014, in response to the OPW 'Optimising Power @ Work' programme, to implement an energy management plan. This has delivered a total of 419,000 kWh of energy savings since 2012. Through a variety of measures, including reducing hot water consumption, reviewing heating and air-conditioning settings, and holding energy-saving workshops for staff, the tenants have lowered the building's energy consumption by 28%. In 2014 the building won an OP@W award in the air-conditioned building category.

Office of the Director of Corporate Enforcement, Dublin



16,220 kWh

Existing metal halide lights in the main pool hall in Nenagh Leisure Centre, which is operated by Tipperary County Council, were upgraded to LED fittings with an expected service life of 12 years. The installation has resulted in savings of 16,220 kWh per annum or a 3.5% reduction in energy consumption and is saving the County Council over €2,750 on annual running costs. The CO₂ saving equivalent from the project is 9 tonnes.

Tipperary County Council



20%

With the assistance of its SEAL energy advisor, this recently-built primary school has been able to reduce energy consumption by 20% when compared with the same period in 2014, through low-cost and no-cost measures. Behavioural change programmes and optimisation of existing heating and lighting systems contributed to a reduction of 22,290 kWh in energy consumption, equivalent to 5.8 tonnes of CO₂ and saving the school over €1,845.

Gaelscoil Chaladh an Treoigh, Limerick



165,700 kWh



University College Dublin carried out LED lighting upgrades in the Architecture and Planning buildings at its Richview campus, which together with smart lighting controls, have delivered campus electrical savings of 15%, in addition to improving aesthetics and light quality in the studios. An inefficient oil boiler was also replaced with a high efficiency condensing boiler which has resulted in significant comfort improvements and reduced gas usage by 14%. The project has reduced annual energy costs by €13,800.

University College Dublin



€19,200

The ESB depot building in Inchicore is a typical example of the ESB's older building stock in need of modernisation and energy saving upgrades. Heat losses through the exterior façade were addressed with high performance triple-glazed windows combined with 100 mm external wall insulation and 150 mm roof insulation. The energy performance rating of the depot has been upgraded from BER G to BER C3. In addition to noticeably improving staff comfort levels, the energy savings of 105,775 kWh are worth up to €19,200 annually.

Electricity Supply Board (ESB), Dublin



5. Towards 2020

5.1 Sub-sectoral Performance

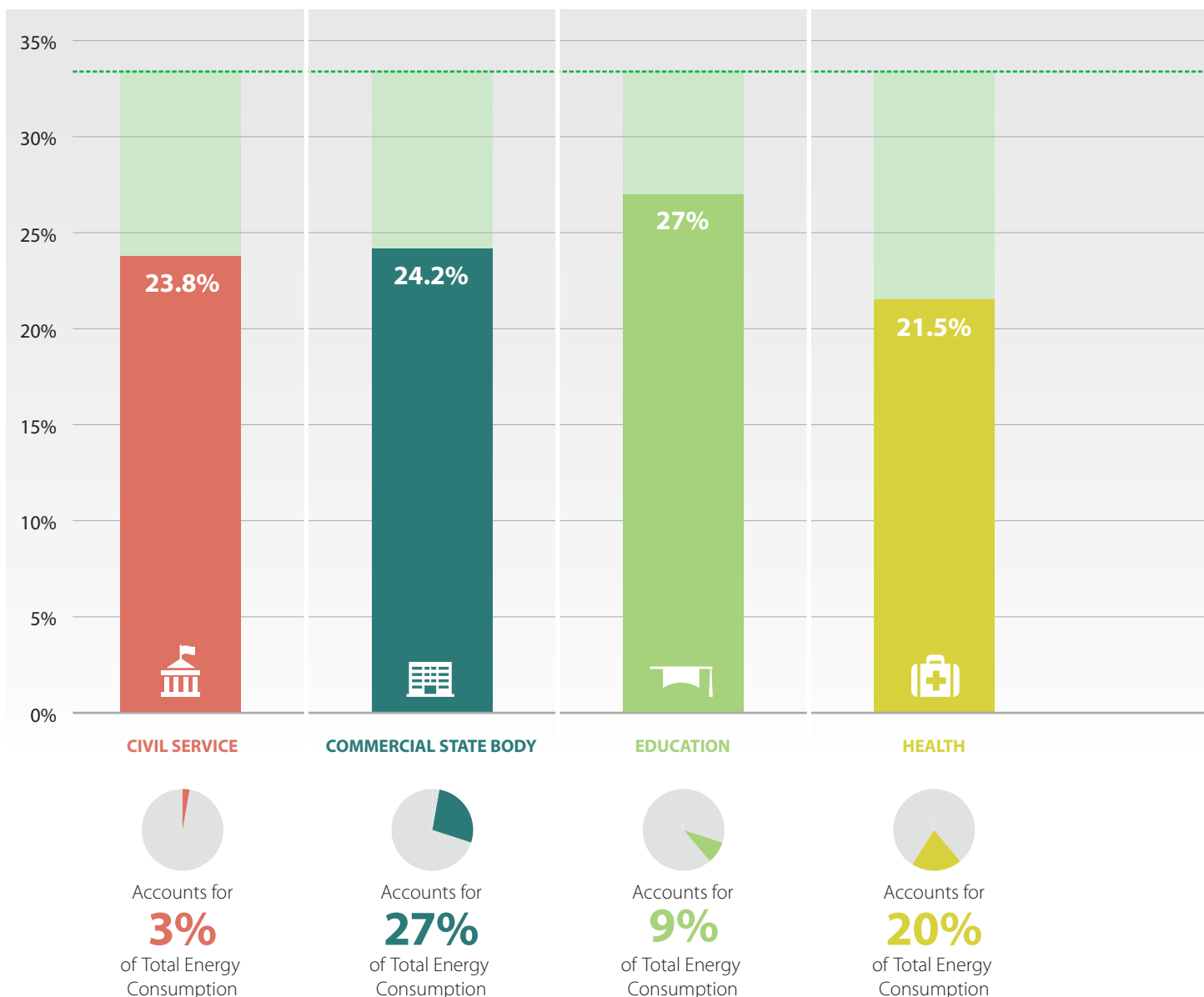
The analysis of the data reported by 337 public bodies and 1,792 schools shows that the annual energy efficiency savings at 2015 represents an overall efficiency gain of 21%.

Notwithstanding this strong result, there are significant challenges ahead for public bodies to maintain this course of action and sustain continuous improvements towards 2020.

Figure 15 illustrates the 2015 position of each sub-sector with respect to the target.

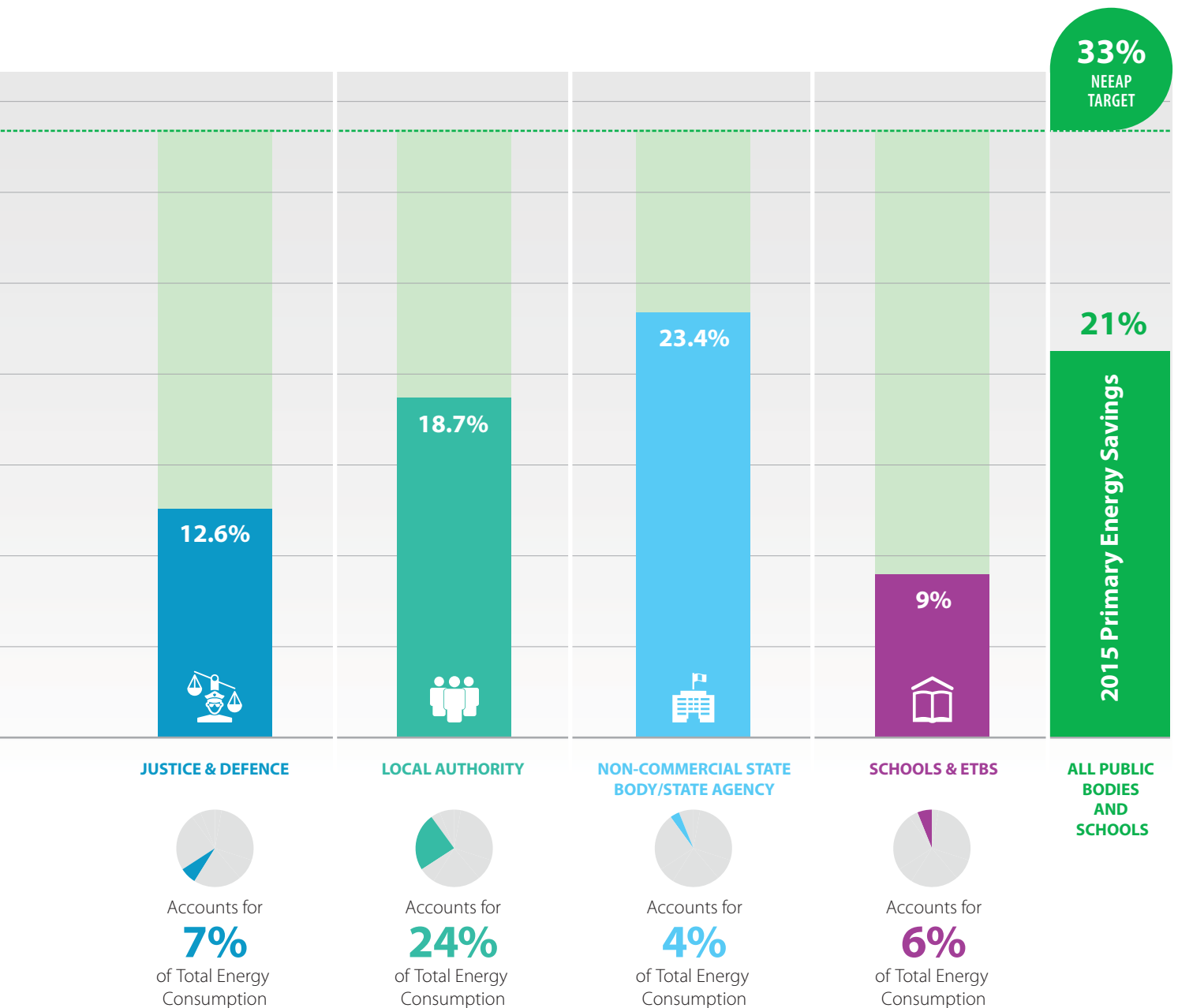
The annual energy efficiency savings to date have been steady with 21% achieved. However, achieving the remaining 12% is likely to be more challenging

FIG. 15: SECTORAL PERFORMANCE AGAINST 2020 NEEAP TARGET



A collective effort across all sub-sectors will be required to meet our 2020 obligations. The M&R performance measurement system enables every organisation – regardless of its level of energy consumption – to analyse the gap to target and design strategic interventions in energy efficiency that will have the most significant impact for it.

The public sector organisations that were requested to submit reports are detailed in the following section 5.2.



5.2 Performance of Public Bodies

SEAI recognises that building a complete energy profile for organisations is an iterative process that will take time as public bodies are in a better position to submit improved data each year. This work is ongoing and 2015 saw a significant increase in the numbers of public bodies that submitted complete reports. Also, following the initial roll-out of the system to schools in 2014, there are now 1,792 schools that submitted complete reports.

SEAI continues to work with public bodies and schools to improve the quality of their data through the provision of guidance materials, training and bespoke support services.

The public bodies and schools are listed in three categories as follows:

Public Bodies (excluding schools)

The 337¹¹ non-school public bodies that made a complete submission to SEAI by the deadline are alphabetically listed in three groups according to their level of energy consumption as follows:

- **Group 1: Energy consumption greater than 50 GWh**

This includes 35 public sector organisations which account for 71% of total reported energy consumption.

- **Group 2: Energy consumption of between 5 and 50 GWh**

This includes 127 public bodies which account for 23% of total reported energy consumption.

- **Group 3: Energy consumption less than or equal to 5 GWh**

This includes 175 public bodies which account for 2% of total reported energy consumption.

Standalone schools

The 1,792 standalone schools that made complete submissions to SEAI by the deadline, accounting for 4% of total reported energy consumption, are listed alphabetically by county.

Non-reporting Public Bodies

The public bodies that did not report are listed alphabetically.

11 Including ETBs but excluding standalone schools.

5.2.1 Public Bodies (excluding schools)

GROUP 1 PUBLIC BODIES: ENERGY CONSUMPTION GREATER THAN 50 GWh

Public Body	Overall Status (2015)	Energy Savings Since Baseline
		%
An Garda Síochána	●	17.5%
An Post	● ²	7.1%
Beaumont Hospital	●	14.3%
Bord na Móna plc	●	52.7%
Bus Éireann	●	0.6%
Coillte Teoranta	●	11.0%
Cork City Council	● ³	17.7%
Cork County Council	● ³	14.6%
daa plc	●	44.8%
Defence Forces	●	12.0%
Department of Agriculture, Food & Marine	● ²	14.9%
Department of Social Protection	●	24.3%
Donegal County Council	● ³	14.7%
Dublin Bus	●	11.9%
Dublin City Council	● ³	20.0%
Dublin City University	●	31.7%
Dún Laoghaire-Rathdown County Council	● ³	11.1%
Electricity Supply Board	●	22.2%

Public Body	Overall Status (2015)	Energy Savings Since Baseline
		%
Fingal County Council	● ³	2.8%
HSE	● ²	27.0%
Iarnród Éireann / Irish Rail	●	36.1%
Irish Prison Service	● ²	7.9%
Irish Water	● ^{3a}	10.1%
Mater Misericordiae University Hospital	●	-42.4%
National University of Ireland, Galway	●	31.6%
Raidió Teilifís Éireann	●	40.2%
Revenue Commissioners	●	12.6%
South Dublin County Council	● ³	24.3%
St. James's Hospital	●	7.3%
St. Vincent's University Hospital	●	19.9%
Transport Infrastructure Ireland	●	-5.5%
Trinity College Dublin	●	22.6%
University College Cork	●	25.7%
University College Dublin	●	25.6%
University of Limerick	●	21.3%

The overall status of energy efficiency improvement on baseline for 2015 is illustrated as follows:

● More efficient than baseline and on track for 2020 target

● More efficient than baseline, but not yet on the path for 2020 target

● Less efficient than baseline

Note 1
Public body submitted sufficient data to calculate a savings result for 2015; however the result lies beyond the expected range of probable energy performance and needs verification.

Note 2
Aspects of the reported data to be addressed to improve data quality and verification.

Note 3
Each local authority's result includes the performance of water services assets up to and including 2013, but excludes water services since then. The savings figure is provisional and may be revised in future years as the local authorities, Irish Water and SEAI continue to work together to improve the quality and quantity of energy data, including historical data.

Note 3a
Irish Water's energy performance is calculated on the basis of the water services assets' performance since 2009. These assets were owned and operated by local authorities up to the end of 2013. The savings figure is provisional and may be revised in future years as the local authorities, Irish Water and SEAI continue to work together to improve the quality and quantity of energy data, including historical data.

GROUP 2 PUBLIC BODIES: ENERGY CONSUMPTION 5 – 50 GWh

Public Body	Overall Status (2015)	Energy Savings Since Baseline
		%
Adelaide and Meath Hospital, Incorporating the National Children's Hospital	●	18.3%
Athlone Institute of Technology	●	29.4%
Brothers of Charity Services Ireland	●	26.6%
Camphill Communities (Ireland)	● ¹	
Cappagh National Orthopaedic Hospital	●	12.5%
Carlow County Council	● ³	16.8%
Cavan & Monaghan Education & Training Board	●	-15.4%
Cavan County Council	● ³	28.2%
Central Bank of Ireland	●	28.6%
Central Remedial Clinic	●	14.3%
Cheeverstown House	●	9.1%
Children's University Hospital	●	14.8%
City of Dublin Education & Training Board	●	8.0%
Clare County Council	● ³	12.0%
Commission for Communication Regulation	●	5.4%
Commissioners of Irish Lights	●	37.1%
Coombe Women & Infants University Hospital	●	-4.4%
Cope Foundation	●	14.7%
Cork Airport	●	44.1%
Cork Education & Training Board	●	9.4%
Cork Institute of Technology	● ²	37.1%
Courts Service	●	-0.6%
Daughters of Charity – Intellectual Disability Services	●	12.9%
Department of Education & Skills	●	21.6%
Department of Environment, Community & Local Government	●	14.2%
Department of Finance	● ²	32.6%
Department of Foreign Affairs & Trade	●	27.7%
Department of Justice & Equality	●	28.3%

Public Body	Overall Status (2015)	Energy Savings Since Baseline
		%
Department of Public Expenditure and Reform	● ¹	
Department of Transport, Tourism & Sport	●	9.9%
Dublin & Dún Laoghaire Education & Training Board	●	42.2%
Dublin Institute of Technology	●	20.7%
Dublin Port Company	●	10.1%
Dún Laoghaire Institute of Art, Design & Technology	●	8.1%
Dundalk Institute of Technology	● ²	-17.4%
EirGrid Plc	●	22.3%
Enable Ireland	●	31.3%
Enterprise Ireland	●	41.8%
Environmental Protection Agency	●	29.1%
Galway City Council	● ³	28.6%
Galway County Council	● ³	21.7%
Galway Mayo Institute of Technology	●	22.3%
Galway Roscommon Education & Training Board	●	6.5%
Gas Networks Ireland	●	43.1%
Horsereading Ireland Ltd	●	20.7%
Houses of the Oireachtas Service	●	22.1%
IDA Ireland	●	55.7%
Inland Fisheries Ireland	●	9.1%
Institute of Technology Blanchardstown	●	61.1%
Institute of Technology Carlow	●	32.3%
Institute of Technology Sligo	●	15.2%
Institute of Technology Tallaght	●	32.9%
Institute of Technology Tralee	●	34.4%
Irish Aviation Authority	●	15.4%
Irish Blood Transfusion Service	●	25.7%
Irish Greyhound Board / Bord na gCon	●	6.9%
Irish Wheelchair Association	●	-4.8%
Kerry County Council	● ³	28.9%
Kerry Education & Training Board	●	18.4%

The overall status of energy efficiency improvement on baseline for 2015 is illustrated as follows:

● More efficient than baseline and on track for 2020 target

● More efficient than baseline, but not yet on the path for 2020 target

● Less efficient than baseline

Note 1

Public body submitted sufficient data to calculate a savings result for 2015; however the result lies beyond the expected range of probable energy performance and needs verification.

Note 2

Aspects of the reported data to be addressed to improve data quality and verification.

Note 3

Each local authority's result includes the performance of water services assets up to and including 2013, but excludes water services since then. The savings figure is provisional and may be revised in future years as the local authorities, Irish Water and SEAI continue to work together to improve the quality and quantity of energy data, including historical data.

Public Body	Overall Status (2015)	Energy Savings Since Baseline
		%
Kildare & Wicklow Education & Training Board	●	-7.6%
Kildare County Council	● ³	14.1%
Kilkenny & Carlow Education & Training Board	●	14.3%
Kilkenny County Council	● ³	19.3%
Laois & Offaly Education & Training Board	●	14.1%
Laois County Council	● ³	18.0%
Leitrim County Council	● ³	-1.0%
Letterkenny Institute of Technology	●	38.9%
Limerick & Clare Education & Training Board	●	13.0%
Limerick City & County Council	● ³	15.7%
Limerick Institute of Technology	●	29.9%
Longford & Westmeath Education & Training Board	●	31.6%
Longford County Council	● ³	18.6%
Louth & Meath Education & Training Board	●	-12.1%
Louth County Council	● ³	33.8%
Marine Institute	●	13.2%
Mary Immaculate College Limerick	●	28.3%
Maynooth University, NUIM	●	22.4%
Mayo County Council	● ³	21.9%
Mayo Sligo & Leitrim Education & Training Board	●	-20.6%
Meath County Council	● ³	10.4%
Mercy Hospital	●	25.8%
Milford Care Centre	●	0.3%
Monaghan County Council	● ³	18.3%
Muiriosa Foundation	●	25.6%
National Gallery	●	42.3%
National Learning Network Ltd.	● ²	-12.4%
National Maternity Hospital	●	2.9%
National Museum of Ireland	●	5.7%
National Rehabilitation Hospital	●	-0.4%
National Treasury Management Agency	● ²	59.3%
Offaly County Council	● ³	13.4%
Office of Public Works	●	23.4%

Public Body	Overall Status (2015)	Energy Savings Since Baseline
		%
Our Lady's Hospice Harold's Cross Limited	●	13.6%
Our Lady's Hospital for Sick Children	●	-13.9%
Peamount Hospital Newcastle	●	5.7%
Permanent TSB	●	17.5%
Port of Cork Company	●	23.5%
RehabCare	● ²	-16.3%
Roscommon County Council	● ³	18.0%
Rotunda Hospital	●	12.3%
Royal College of Surgeons in Ireland	●	33.4%
Royal Hospital	● ²	26.1%
Saint John of God Community Services Limited	●	-0.3%
Sea Fisheries Administration Division	● ²	-17.6%
Shannon Airport Authority Ltd.	●	22.8%
Sligo County Council	● ³	9.9%
South Infirmary – Victoria Hospital	●	-10.4%
National Sports Campus Development Authority (now Sport Ireland)	●	62.5%
St. Michael's Hospital	● ²	13.7%
St. Michael's House	●	12.8%
St. Patrick's College Drumcondra	●	29.2%
State Laboratory	●	29.0%
Stewarts Care Ltd	●	21.7%
Sunbeam House Services	●	15.6%
Teagasc	●	-3.2%
The Irish Museum of Modern Art	●	-8.5%
Tipperary County Council	● ³	35.2%
Tipperary Education & Training Board	●	20.5%
Tyndall National Institute	●	50.3%
Voluntary Health Insurance Board	●	27.4%
Waterford & Wexford Education & Training Board	● ²	-10.4%
Waterford City & County Council	● ³	15.8%
Waterford Institute of Technology	●	28.3%
Waterways Ireland	●	-1.1%
Westmeath County Council	● ³	9.2%
Wexford County Council	● ³	4.2%
Wicklow County Council	● ³	10.5%

The overall status of energy efficiency improvement on baseline for 2015 is illustrated as follows:

● More efficient than baseline and on track for 2020 target

● More efficient than baseline, but not yet on the path for 2020 target

● Less efficient than baseline

Note 1

Public body submitted sufficient data to calculate a savings result for 2015; however the result lies beyond the expected range of probable energy performance and needs verification.

Note 2

Aspects of the reported data to be addressed to improve data quality and verification.

Note 3

Each local authority's result includes the performance of water services assets up to and including 2013, but excludes water services since then. The savings figure is provisional and may be revised in future years as the local authorities, Irish Water and SEAL continue to work together to improve the quality and quantity of energy data, including historical data.

GROUP 3 PUBLIC BODIES: ENERGY CONSUMPTION LESS THAN OR EQUAL TO 5 GWH

Public Body	Overall Status (2015)	Energy Savings Since Baseline
		%
Abbey Theatre	●	31.6%
Ability West	●	-1.1%
Adoption Authority of Ireland	●	26.8%
AHEAD	●	30.1%
An Bord Pleanála	●	46.7%
An Chéim Computer Services Ltd	●	-50.5%
An Foras Teanga – Ulster Scots Agency	●	28.4%
Arts Council	●	7.3%
Athlone Education Centre	●	12.1%
Bantry Bay Port Company Ltd	● ²	-49.4%
Blackrock Education Centre	●	29.6%
Bord Bia	●	53.5%
Bord Iascaigh Mhara	●	1.8%
Broadcasting Authority of Ireland	●	18.9%
Carrick-on-Shannon Education Centre	●	-24.9%
Carriglea Cáirde Services	●	20.0%
Central Statistics Office	●	27.4%
Chief State Solicitor's Office	●	10.7%
Children's Sunshine Home/Laura Lynn	●	20.3%
Citizens Information Board	●	17.4%
Clare Education Centre	●	19.3%
Co. Wexford Education Centre	●	-1.3%
Cobh Community Hospital	● ²	8.1%
Commission for Aviation Regulation	●	11.4%
Commission for Energy Regulation	●	63.9%
Companies Registration Office & Registrar of Friendly Societies	●	-1.1%
Competition and Consumer Protection Commission	●	-2.0%
Cork Education Support Centre	● ²	8.5%
CORU	●	12.3%
Crawford Art Gallery Cork	●	28.1%
Data Protection Commissioner	●	-4.2%
Daughters of Charity – Child & Family Services	●	-3.4%
Dental Council	● ²	42.2%

Public Body	Overall Status (2015)	Energy Savings Since Baseline
		%
Department for Arts, Heritage & Gaeltacht	●	60.1%
Department of Children & Youth Affairs	●	17.3%
Department of Communications, Energy & Natural Resources	●	20.2%
Department of Defence	●	17.1%
Department of Health	●	15.7%
Department of Jobs, Enterprise & Innovation	●	34.4%
Department of the Taoiseach	● ²	-28.5%
Design & Crafts Council of Ireland	● ²	-19.3%
Digital Hub Development Agency	●	7.1%
Donegal Education Centre	●	-6.8%
Donegal Regional Airport	●	-10.3%
Drogheda Port Company	●	63.8%
Drumcondra Education Centre	● ²	30.5%
Dublin Dental Hospital & School	●	22.1%
Dublin Institute for Advanced Studies	●	26.2%
Dublin West Education Centre	●	22.6%
Dun Laoghaire Harbour Company	●	52.1%
Economic and Social Research Institute (ESRI)	●	4.2%
Education Centre Tralee	●	9.9%
Ervia (Shared Services)	●	-7.7%
Fáilte Ireland	●	40.8%
Financial Services Ombudsman	●	18.4%
FOLD Ireland	●	-23.0%
Food Safety Authority of Ireland	●	6.7%
Foyle, Carlingford and Irish Lights Commission	● ²	27.8%
Galway Education Centre	●	-3.1%
Garda Inspectorate	●	16.2%
Garda Ombudsman Commission	●	29.6%
Good Shepherd Services	●	-25.3%
Health & Safety Authority	●	24.5%
Health Products Regulatory Authority	●	27.1%
Heritage Council	●	30.5%

The overall status of energy efficiency improvement on baseline for 2015 is illustrated as follows:

● More efficient than baseline and on track for 2020 target

● More efficient than baseline, but not yet on the path for 2020 target

● Less efficient than baseline

Note 1

Public body submitted sufficient data to calculate a savings result for 2015; however the result lies beyond the expected range of probable energy performance and needs verification.

Note 2

Aspects of the reported data to be addressed to improve data quality and verification.

Note 3

Each local authority's result includes the performance of water services assets up to and including 2013, but excludes water services since then. The savings figure is provisional and may be revised in future years as the local authorities, Irish Water and SEAI continue to work together to improve the quality and quantity of energy data, including historical data.

Public Body	Overall Status (2015)	Energy Savings Since Baseline
		%
Higher Education Authority Irish Research Council	●	28.3%
Housing Finance Agency	●	1.7%
Incorporated Orthopaedic Hospital of Ireland	●	50.7%
Inishowen Development Partnership	●	17.8%
InjuriesBoard.ie	●	32.2%
Inspector of Prisons and Places of Detention	●	-149.0%
Institute of Public Administration	●	-2.0%
InterTradelreland	●	5.4%
Irish Bank Resolution Corporation Limited	● ¹	
Irish Film Classification Office	●	-15.7%
Irish Human Rights & Equality Commission	● ²	52.0%
Irish Water Safety	●	3.0%
KARE	●	11.8%
Kildare Education Centre	●	17.9%
Kilkenny Education Centre	●	-0.7%
Labour Court	●	8.4%
Laois Education Centre	●	5.9%
Law Reform Commission	●	6.1%
Léargas - The Exchange Bureau	● ¹	
Legal Aid Board	●	18.0%
Leopardstown Park Hospital	●	20.7%
Limerick Education Centre	● ¹	
Local Government Management Agency	●	35.5%
Marymount University Hospital and Hospice	●	64.4%
Mayo Education Centre	●	-7.7%
Medical Bureau of Road Safety	●	31.9%
Mental Health Commission	●	20.0%
Met Éireann	●	25.2%
Monaghan Education Centre	●	0.8%
National Archives	●	38.4%
National Cancer Registry Board	●	10.9%
National College of Art and Design	●	31.2%
National Council for Special Education	●	11.6%
National Disability Authority	●	13.1%

Public Body	Overall Status (2015)	Energy Savings Since Baseline
		%
National Economic and Social Development Office	●	21.4%
National Library of Ireland	●	26.7%
National Milk Agency	●	3.6%
National Oil Reserves Agency	●	45.8%
National Transport Authority	●	35.4%
National Treatment Purchase Fund	●	1.7%
Navan Education Centre	●	12.9%
NCCA (National Council for Curriculum and Assessment)	● ²	42.0%
Northern & Western Regional Assembly	●	15.8%
NSAI	●	-13.6%
Nursing and Midwifery Board of Ireland	●	18.8%
Office of the Attorney General	●	2.5%
Office of the Comptroller & Auditor	●	14.6%
Office of the Director of Corporate Enforcement	●	24.7%
Office of the Director of Public Prosecutions	● ²	32.7%
Office of the Ombudsman	●	31.9%
Office of the Ombudsman for Children	●	30.3%
Office of the Ombudsman for the Defence Forces	●	22.5%
Oifig an Choimisinéara Teanga	●	15.8%
Ordnance Survey Ireland	●	-7.7%
Port of Galway	●	-56.2%
Port of Waterford Company	● ¹	
Pre-Hospital Emergency Care Council	●	29.8%
President's Establishment	●	7.3%
Private Security Authority	●	4.4%
Probation Service agency of Dept of Justice & Equality	●	17.8%
Property Service Regulatory Authority	●	41.3%
Public Appointment Service	●	51.9%
Quality and Qualifications Ireland	●	63.2%
Railway Safety Commission	●	27.7%
Road Safety Authority	● ²	-17.0%
Royal Irish Academy	●	11.8%

The overall status of energy efficiency improvement on baseline for 2015 is illustrated as follows:

● More efficient than baseline and on track for 2020 target

● More efficient than baseline, but not yet on the path for 2020 target

● Less efficient than baseline

Note 1

Public body submitted sufficient data to calculate a savings result for 2015; however the result lies beyond the expected range of probable energy performance and needs verification.

Note 2

Aspects of the reported data to be addressed to improve data quality and verification.

Note 3

Each local authority's result includes the performance of water services assets up to and including 2013, but excludes water services since then. The savings figure is provisional and may be revised in future years as the local authorities, Irish Water and SEAL continue to work together to improve the quality and quantity of energy data, including historical data.

Public Body	Overall Status (2015)	Energy Savings Since Baseline
		%
Royal Irish Academy of Music	●	-5.1%
Royal Victoria Eye and Ear Hospital	●	28.4%
Safe Food	●	26.0%
Science Foundation Ireland	● ²	28.0%
Sea Fisheries Protection Authority	●	7.8%
Shannon Commercial Properties	●	70.7%
Shannon Foynes Port Company	●	17.7%
Sligo Education Centre	●	-4.6%
SOLAS	● ²	51.9%
SOS Kilkenny Ltd.	●	-4.2%
Southern Regional Assembly	●	19.5%
Special EU Programmes Body	●	26.0%
Irish Sports Council (now Sport Ireland)	●	0.9%
St. Angela's College Sligo	●	27.7%
St. Catherine's Association Ltd.	●	46.2%
St. Christopher's Services Ltd.	●	7.7%
St. Cronan's Association Limited	●	-1.8%
St. Francis Hospice	●	30.0%
St. John's Hospital	●	17.9%
St. Josephs Foundation	●	34.7%
St. Patrick's Centre Kilkenny	● ¹	
St. Vincent's Hospital Fairview	●	-12.7%
Sustainable Energy Authority of Ireland	●	46.3%
Teaching Council	●	31.3%
TG4	●	10.5%
The Bessborough Centre	●	32.0%
The Health Information & Quality Authority (HIQA)	●	43.9%
The Health Insurance Authority	●	37.3%
The Health Research Board	●	15.8%
The Insolvency Service of Ireland	●	21.0%
The Irish Film Board	●	30.3%
The Medical Council	●	11.4%
The National Concert Hall	●	23.8%
The Pensions Board	●	26.5%
The Pharmaceutical Society of Ireland - The Pharmacy Regulator	●	44.7%
The Property Registration Authority	●	17.5%
Tourism Ireland	●	29.7%

Public Body	Overall Status (2015)	Energy Savings Since Baseline
		%
Údarás na Gaeltachta	● ²	19.6%
Valuation Office	●	-1.9%
Waterford Teachers' Centre	●	2.9%
West Cork Education Centre	●	-19.7%
Western Care Association	●	36.1%
Western Development Commission	●	7.8%
Workplace Relations Commission	●	-3.8%

The overall status of energy efficiency improvement on baseline for 2015 is illustrated as follows:

● More efficient than baseline and on track for 2020 target

● More efficient than baseline, but not yet on the path for 2020 target

● Less efficient than baseline

Note 1

Public body submitted sufficient data to calculate a savings result for 2015; however the result lies beyond the expected range of probable energy performance and needs verification.

Note 2

Aspects of the reported data to be addressed to improve data quality and verification.

Note 3

Each local authority's result includes the performance of water services assets up to and including 2013, but excludes water services since then. The savings figure is provisional and may be revised in future years as the local authorities, Irish Water and SEAI continue to work together to improve the quality and quantity of energy data, including historical data.

5.2.2 Standalone schools

SEAI would like to extend its thanks to the following 1,792 schools, listed alphabetically by county that made complete submissions by the reporting deadline.

Schools under the aegis of Education and Training Boards (ETBs) report their data via their parent ETBs. Individual ETB schools are not listed here. The ETBs are listed in section 5.2.1.

School Name	Roll Number
Co Carlow	
Ballinabranna Mixed NS	17756D
Bennekerry NS	17501Q
Bishop Foley Memorial School	17053P
Borris Mixed NS	00651R
Holy Family BNS	19477J
Holy Family Girls NS	19478L
Presentation / De La Salle College	61150N
Presentation College Askea	61141M
Queen Of Universe NS	18183K
Rathoe NS	01415K
Saplings Carlow Special School	20370V
Scoil Nais Bhride	04077I
Scoil Nais Iosef Naofa	18424G
Scoil Nais Mhichil	17462J
Scoil Nais Mhuire	09320Q
Scoil Nais Molaise	02124E
SN Ceatharlach	18615N
SN Cluain Na Gall	17514C
SN Fhoirtcheirn/Fhinin	17994T
SN Muire Lourdes	13507I
SN Naomh Fhiach	19958C
SN Nmh Fhingin	17096K
SN Peadar Agus Pol Ballon	14837L
St. Brendans NS Drummond	17481N
St. Bridgets Monastery	13105L
St. Columbas NS	13607M
St. Josephs NS Hacketstown	17127S
St. Leos College	61140K
St. Marys Academy CBS	61120E
St. Marys Knockbeg College	61130H
St. Marys NS Muinebeag	11135K
St. Patricks NS Ballymurphy	18510W
Co Cavan	
Bailieboro NS	18059J
Bailieborough Community School	91351S
Ballyconnell Central NS	11409V
Billis NS	12099O
Cabra Central NS	19527V
Cnoc An Teampaill	17625L
Convent Of Mercy NS Belturbet	16057S
Corlea NS	14320U
Coronea NS	16767D
Dromaili S N	11541V
Drumkilly NS	19202Q
Drung No 2 NS	19921C

Legend

NS	National School
PS	Primary School
SN	Scoil Náisiúnta
SS	Secondary School
ETNS	Educate Together National School

School Name	Roll Number
Holy Family SS Cootehill	19439B
Killygarry NS	14399N
Kilmore Central NS	19322D
Kilnaleck Mixed NS	01356U
Knocknagilla NS	18355N
Milltown NS	08948L
Mullahoran Central NS	19363R
Scoil Bhride Killeshandra	16390F
Searcog I NS	14336M
SN Carraig A Bruis	18857O
SN Corr Lorgan	18518P
SN Corrabha	16959M
SN Cruabanai	08453H
SN Doire Na Ceise	17601U
SN Lathrach 2	14211P
SN Leitir	18564W
SN Maodhog	17630E
SN Mhuire Muileann Larainn	08143P
SN Tamhnach Dhuibh	17240O
St. Josephs NS Kingscourt	20172R
St. Killians NS	19608V
St. Marys NS Drung	16520P
St. Patricks NS Killinagh	19871N
Co Clare	
Annagh NS	15221A
Bansha NS Kilkee	11714D
Barefield Mixed NS	14830U
Bodyke NS	11990E
Boston NS	10763L
Broadford & Kilbane NS	20452A
Bunscoil Na Mbairthre	16677C
Carrigaholt Mixed NS	18630J
Christi Ri	19559L
Clarecastle NS	17026M
Clohanbeg NS	11234M
Colaiste Mhuire College Road	61930Q
Coolmeen NS	12633I
Coore NS	20404M
Cratloe NS	04919H
Cross NS	14111L
Eidhneach NS	14622N
Ennis NS	15042A
Ennistymon NS	20245S
Forgleann NS	18768P
Gael Scoil Mhichil Chiosog	19838P
Gaelscoil Donncha Rua	19849U

School Name	Roll Number
Kildysart NS	15301V
Kilkishen NS	13870E
Kilmaley NS	14468G
Kilmihil NS	13826B
Kilnamona NS	13625O
Kilrush Community School	91448K
Lisdoonvarna NS	19700J
Mary Immaculate Secondary School	62000W
Mercy Convent Killaloe	18624O
Miltown Malbay BNS	18720K
Mol An Oige	20313J
Moveen NS	13876Q
Mullach NS	03928D
New Quay NS	19043W
Ogonnelloe NS	17563P
Quilty NS	17020A
Raheen Wood Steiner School	20312H
Rockmount Mixed NS	09390O
Ruan Central NS	19442N
Scoil Mhuire Ennistymon	61950W
Scoil Na Maighdine Mhuire Cora Chaithlin	20127M
Scoil Seanain Naofa	04548V
Shannon Airport 1 NS	18739I
SN Aibhistin Naofa	17847G
SN An Phairtin Mixed	16946D
SN Baile An Droichid	18467B
SN Cluain An Atha	17246D
SN Cnoc An Ein	17583V
SN Cnoc Doire	18327I
SN Colm Cille	17270A
SN Dubh Rath	18696Q
SN Iosef Naofa	18339P
SN Liosceanuir	18410S
SN Mhuire Feakle	02439G
SN Padraig Nfa Fanoir	13379C
St. Aidans NS Smithstown	19698C
St. Annes SS	19414I
St. Josephs Secondary School Spanish Point	62010C
St. Marys NS Lahinch	18753C
St. Mochullas NS	20075T
Tomgraney NS	14571W
Toonagh NS	03898U
Tubber NS	10886E
Co Cork	
Adrigole NS	16885J
Ardagh Boys NS	12598J
Ardscuil Ui Urmoltaigh	62050O
Ath Treasna GNS	16648S
Ballincarriga Mixed NS	10739O
Ballincollig Community School	91386O
Ballindangan Mixed NS	04054T
Ballingree Mixed NS	15140A
Ballintemple NS Crab Lane	15781P
Ballygarvan NS	16746S
Ballyhea NS	17112F
Bandon Boys NS	19977G

School Name	Roll Number
Bandon Grammar School	62060R
Banteer NS	02803B
Barryroe NS	19249T
Bishopstown Community School	91397T
Boherbue Comprehensive School	81009B
Boherbue NS	16396R
Bunscoil Chriost Ri	20388R
Burnfort NS	11249c
Caheragh NS	19557H
Canovee Mixed NS	12292I
Castlelyons BNS	01867W
Castlemartyr NS	13647B
Castletownroche NS	14107U
Christ King Girls Secondary School	62692I
Christian Brothers College Sidney Hill	62520C
Clochar Na Toirbhirte Doneraile	04268P
Cloyne BNS	02452V
Cobh NS	10771K
Colaiste An Chroi Naofa	62130M
Colaiste An Spioraid Naoimh	62580U
Colaiste Chriost Ri	62560O
Colaiste Na Toirbhirte	62061T
Convent Of Mercy Clonakilty	07651G
Coomhola NS	15646J
Curraghagalla NS	17790D
De La Salle College Macroom	62310O
Deerpark CBS	62540I
Douglas Community School	91396R
Douglas Rochestown Educate Together NS	20413N
Dromagh Mixed NS	15380U
Druimne NS	11262R
Drumclugh NS	16246V
Dundar Mhuighe NS	16940O
Dunmanway Convent Inf	13662U
Dunmanway Convent NS	13661S
Dunmanway Model NS	05636A
Educate Together Carrigaline	20310D
Fermoy Adair NS	10523O
Freemount Mixed NS	06295f
Gaelcholaiste Mhuire	62531H
Gaelscoil An Ghoirt Alainn	19993E
Gaelscoil Bheanntrai	20001N
Gaelscoil De Hide Mainistir Fhearmai	19851H
Gaelscoil Dr M Ui Shuilleabhain	20009G
Gaelscoil Droichead Na Banndan	20025E
Gaelscoil Mhachan	19908K
Gaelscoil Mhichil Ui Choileain	20006A
Gaelscoil Mhuscraí	20151J
Gogginshill NS	12263B
Grange Fermoy NS	15594Q
Greenmount Monastery NS	12473M
Holy Family SS Charleville	19433M
Iosef Naofa	18377A
Kanturk BNS	14052V
Kilcolman NS	16259H
Kilcorney Mixed NS	08828B

School Name	Roll Number
Killavullen NS	15903D
Kinsale Community School	91499E
Kinsale NS	14726C
Laragh NS	05477G
Leamlara Mixed NS	04118T
Lios Maighir	17300G
Lisavaird Mixed NS	18659K
Liscarrol NS	12015F
Lisgriffin NS Goleen	18100D
Loreto Secondary School Fermoy	62270F
Lower Glanmire NS	13663W
Macroom Convent NS	10047I
Maulatrahane Central NS	19978I
Mhuire Ar Chnoc Haoine	19714U
Midleton College	62370J
Midleton Convent NS	00512D
Monkstown NS	17323S
Muire Gan Smal Cluain Dilleain	17955J
Naomh Eoin Easpal	14198D
Naomh Mhuire B	18000W
Newcestown NS	19348V
Newmarket BNS	11236Q
North Presentation Primary School	20036J
Our Lady Of Good Counsel NS	18208A
Our Lady Of Lourdes	17313P
Our Lady Of Mercy NS Bantry	09161W
Patrician Academy	62330U
Pobalscoil Na Trionoide	91513S
Presentation Brothers College	62570R
Presentation Convent Bandon	05257P
Presentation Secondary School Mitchelstown	62421A
Rathcormac NS	17609N
Regina Mundi College	62691G
Ringaskiddy Lower Harbour NS	20049S
Riverstown NS	13747F
Rockchapel NS	17763A
Roscarbery Con NS	14813U
Rusheen NS	12395S
Rushnacahara NS	12685E
School Of The Divine Child Scoil An Linbh Iosa	18483W
Scoil Aiseiri Christ	20038N
Scoil An Athair Tadhg O Murchu	19882S
Scoil Bhríde Ballydehob	14225D
Scoil Chaitigheirn	19507P
Scoil Chaitriona Ballynoe	18472R
Scoil Colmcille	16680O
Scoil Dhairbhre	13125R
Scoil Mhuire 2 Sidney Place	62690E
Scoil Mhuire Caislean Uí Dhonnabhain	18468D
Scoil Muire Na Ngrast	19672H
Scoil Na Mbraithe Midleton	16684W
Scoil Na Mbraithe Mitchelstown	17639W
Scoil Na Mbuachailli	20022V
Scoil Naomh Aine Charleville	17156C
Scoil Naomh Brid C	18563U
Scoil Naomh Caitriona	18253F

School Name	Roll Number
Scoil Naomh Eoin Ballincurragh	04230N
Scoil Naomh Mhuire C	17755B
Scoil Naomh Mhuire N Mhuire An Oileain	14000C
Scoil Naomh Seosamh Skibbereen	08430S
Scoil Phadraig Naofa Foxwood	20335T
Scoil Realt Na Mara Ballycotton	16109L
Scoil Ursula	05940D
Shanagarry NS	17950W
Sherkin Island NS	14065H
SN Achadh Bolg	17515E
SN Achadh Eochaille	10243I
SN An Chlochair	17087J
SN An Gharrain	18020F
SN Ath An Mhuillinn	17829E
SN Ath Fhada	17579H
SN Ath Na Lionta	13483U
SN B Togher Cork	13980L
SN Baile An Mhuirne	15346U
SN Baile Deasmumhan	14014N
SN Baile Muine	18246I
SN Baile Uí Ghiblin	02114B
SN Barra Naofa	18356P
SN Barra Naofa Bhuach	19231A
SN Barra Naofa Cailini	19232C
SN Bhreannain C	19427R
SN Carraig An Ime	17079K
SN Chuan Doir	01272O
SN Cill Dairbhre	19526T
SN Cill Mhic Abhaidh	11245R
SN Clogach	18444M
SN Cnoc Na Croighe	18549D
SN Cros Tseain	17363H
SN Cuilinn Uí Caoimh	17171V
SN Droichead Na Bandan	18431D
SN Fhiachna	19420D
SN Fhursa Ladhar	18316D
SN Fionan Na Reanna	18713N
SN Garran An Easaigh	18491V
SN Gleann Na Huladh	12446J
SN Gleannamhain	18196T
SN Iosef Naofa Mardyke	16339F
SN Mharcius B	19426P
SN Mhuire B	18301N
SN Mhuire Ballyhooley	19404F
SN Mhuire Mixed	18128C
SN Na Mona Fliche	16955E
SN Naomh Antaine	12203G
SN Naomh Caitriona	17528N
SN Naomh Eoin B	17754W
SN Naomh Mhuire Fearann	18487H
SN Oir Cheann	12259K
SN Rath A Bharraigh	17715M
SN Rathain	17533G
SN Re Na Scrine	17765E
SN Sean Baile Mor	03704E
SN Seosamh Cobh	15718I

School Name	Roll Number
Sonass Special Primary junior School	20162O
South Abbey NS	10724B
St. Aloysius College Carrigtwohill	62140P
St. Aloysius School	62630J
St. Angelas College	62640M
St. Brendans NS Bantry	10548H
St. Columbas NS With Facility For Deaf Children	05508O
St. Johns Girls NS	18535P
St. Kevins School	19788D
St. Lukes Mixed NS	13648D
St. Lukes NS Douglas	12012W
St. Marys Central School	19595P
St. Marys Church Of Ireland NS	18279A
St. Marys High School	62380M
St. Marys NS Orilia Terrace	16377N
St. Marys Secondary School Macroom	62320R
St. Marys Spec Sch	19759T
St. Patrick's BNS	20477Q
St. Vincents Convent NS	13696O
St. Vincents Secondary School St. Marys Road	62590A
Star Of The Sea Primary School	20105C
Templebrady NS	12169J
Togher NS	17281F
Trafrask Mixed NS	05565D
Tullaslease Mixed NS	09815U
Union Hall Mixed NS	12383L
Ursuline Secondary School Blackrock	62650P
Vicarstown Mixed NS	06342L
Walterstown NS	12281D
Whitegate Mixed NS	11992I
Co Donegal	
Ayr Hill NS Ramelton	18251B
Browneknowe NS	07464H
Buncrana NS	16854V
Colaiste Cholmcille	91506V
Craanford NS	19009W
Drumfad NS	16137Q
Frosses NS	16375J
Gaelscoil Adhamhnain	19971R
Gaelscoil Chois Feabhail	20144M
Gartan NS	13755E
Gleneely NS	18172F
Glenmaquin No 2 NS	09748I
Inver NS	16458N
Kilbarron NS	10595Q
Killaghtee NS	19089A
Killybegs Common NS	16608G
Killygordan NS	18874O
Little Angels Special School	19724A
Loreto Secondary School Letterkenny	62840U
Min A Ghabhann NS	16823K
Monreagh NS	07143K
Moville NS	15763N
Moyle NS	19633U
Naomh Adhamhnain	18508M
Naomh Bridhid	16836T

School Name	Roll Number
Pobalscoil Chloich Cheannfhaola	91408V
Ray NS	14941G
Scoil An Leinbh Iosa	17260U
Scoil Aodh Rua & Nuala	19963S
Scoil Bhríde Conmhaigh	18737E
Scoil Bhríghde Porthall	17552K
Scoil Choilmcille	18625Q
Scoil Cholmcille	14631O
Scoil Cholmcille An Tearmann	14194S
Scoil Cholmcille Newtowncunningham	16820E
Scoil Mhuire An Craosloch	18371L
Scoil Mhuire Caiseal Ceanndroma	18120J
Scoil Mhuire Dristearnain	18517N
Scoil Mhuire Glenties	19912B
Scoil Mhuire Secondary School	62770C
Scoil Naomh Chaitriona	17945G
Scoil Naomh Fiachra	12077E
Scoil Naomh Iosaf	01574H
Scoil Naomh Mhuire Ceann Mhalanna	18446Q
Scoil Naomh Treasa C	16108J
Scoil Phadraig	17057A
Scoil Phadraig Rath Seinche	18520C
Scoil Roisin	17328F
Scoil Treasa Naofa Malainn	17721H
SN An Chillin	16603T
SN An Iorball Riabaigh	07626H
SN Baile An Bhailsig	18703K
SN Baile An Caislean	18700E
SN Baile Mor	18250W
SN Ceathru Caol	17549V
SN Chill Coinnigh	13563S
SN Domhnach Mor	17241Q
SN Dun Ceannfhaolaidh	18421A
SN Eadan Fhionnfhaoich	17122I
SN Fhionnain	17704H
SN Fhiontra	16357H
SN Fothar	16903I
SN Glasain	16763S
SN Gleann Coimhead	17575W
SN Loch An Iubhair	16829W
SN Mhuire Baile An nGalloglach	18151U
SN Na Sraithe Moire	15208I
SN Naomh Naille	15770K
SN Naomh Aonghus	19359D
SN Naomh Baoithin	19518U
SN Naomh Brid Na Dunaibh	19228L
SN Naomh Samhthann	17040G
SN Neill Mor	11843O
SN Talamh Na Coille	17728V
St. Columbas Comprehensive School	81010J
St. Conals	19756N
St. Eunans College	62830R
St. Francis NS Barnesmore	09660R
St. Macartans Central	19686S
St. Orans NS	16789N
St. Riaghans NS	17716O

School Name	Roll Number
Co Dublin	
Adamstown Castle Educate Together NS	20268H
All Saints NS Blackrock	10494K
Blackrock College	60030V
Blessed Oliver NS	17569E
Boooterstown Boys	06200O
Boooterstown NS	19901T
Bracken Educate Together NS	20282B
Carysfort NS	14586M
Christian Brothers College Monkstown Park	60180R
City West Educate Together NS	20402I
Colaiste Choilm Swords	60383I
Colaiste Iosagain Bothar Stigh Lorgan	60042F
Colaiste Phadraig CBS	60264A
Corduff NS Lusk	15650A
Divine Mercy Senior NS	20187H
Gaelscoil Bhaile Brigín	20252P
Gaelscoil Eiscir Riada	20223I
Gaelscoil Naomh Padraig	19940G
Griffeen Valley Educate Together NS	20166w
Harold Boys NS	15132B
Holmpatrick NS	14180H
Holy Child Community School	91330K
Holy Child Secondary School	60250M
Holy Family Community School	91301D
Holy Family Junior NS	19721R
Holy Family School Dunedin Park	19840C
Holy Family Senior NS	19877C
John Paul II NS	19627C
Kilternan NS 1	18806U
Loreto Abbey Secondary School	60130C
Loreto College Swords	60810B
Loreto NS	19066L
Malahide Community School	91325R
Mary Queen Of Ireland NS	19693P
Monkstown Educate Together NS	20060G
Newpark Comprehensive School	81001I
Our Lady Good Counsel GNS	19321B
Our Lady Of Good Counsel Boys NS	19320W
Our Lady Of Mercy Convent School	17970F
Portmarnock Community School	91324P
Rathdown School	60090Q
Rathmichael NS	11873A
Rockford Manor Secondary School	60081P
Rush & Lusk Educate Together NS	20176C
Rush NS	19660A
Scoil Aine Naofa Esker	19676P
Scoil Caoimhin Naofa	17954H
Scoil Chronain	19503H
Scoil N Breandan	16844S
Scoil Padraig Naofa B Hollypark	19258U
Scoil Realt Na Mara	19625V
SN Briotas	18173H
SN C Naomh Padraig	18412W
SN Cholmcille C	18977B
SN Cholmille B	18976W

School Name	Roll Number
SN Cnoc Ainbhill	17979A
SN Muire An Sean Baile	17263D
SN Naomh Treasa	19515O
SN Nsaibheastar Naofa	17928G
SN San Treasa	18647D
St. Andrews NS Lucan	12014D
St. Andrews NS Malahide	11583O
St. Augustines School	18499O
St. Brigids NS Merville Rd	16794G
St. Georges NS	15315J
St. Helens Senior NS	19762I
St. Johns NS Ballybrack	19960M
St. Joseph Of Cluny Secondary School	60260P
St. Josephs College Lucan	60263V
St. Josephs Tivoli Road	19938T
St. Louise De Marillac Primary School	20397S
St. Marys NS Woodview	19817H
St. Molaga Senior NS	16970A
St. Patricks Boys NS	16267G
St. Patricks GNS	19259W
St. Raphaelas NS	17470I
St. Raphaelas Secondary School	60361V
Swords Borough NS	12358M
Swords Educate Together NS	20145O
The Harold School	20141G
Trinity House School	19859A
Willow Park School	60040B
Dublin City	
An Taonad Reamhscoile	Dublin 1 19361N
Gaelscoil Cholaiste Mhuire	Dublin 1 19926M
Henrietta Street School	Dublin 1 20021T
Mount Carmel Secondary School	Dublin 1 60853T
Rutland Street NS	Dublin 1 19946S
St. Vincents Inf Boys	Dublin 1 15816I
City Quay Boys NS	Dublin 2 11578V
Eoin Baisde B Sois	Dublin 3 19006Q
Mount Temple Comprehensive School	Dublin 3 81002K
SN Eoin Baisde B Sin	Dublin 3 17936F
SN Eoin Baisde G Sen	Dublin 3 17148D
SN Na Lanai Glasa	Dublin 3 17730I
SN Seosamh Na Mbrathar	Dublin 3 18726W
St. Marys NS Windsor Ave	Dublin 3 19981U
Marian College	Dublin 4 60500J
Muckross Park College	Dublin 4 60710U
Scoil Muire	Dublin 4 17279S
SN Paroiste Maitiu Nfa	Dublin 4 18282M
St. Conleths College	Dublin 4 60590N
St. Declans Special Sch	Dublin 4 18569J
Star Of The Sea	Dublin 4 15995L
Chanel College	Dublin 5 60550B
Gaelscoil Mide	Dublin 5 19777V
Manor House School	Dublin 5 60300B
Mercy College Coolock	Dublin 5 60871V
Naiscoil Ide	Dublin 5 17978V
North Bay Educate Together NS	Dublin 5 19954R
SN Caitriona C	Dublin 5 18361I

School Name		Roll Number
Scoil Aine C	Dublin 5	17977T
Scoil Bhreadain	Dublin 5	18360G
Scoil Nais Ide Cailini	Dublin 5	19298J
Scoil Neasain	Dublin 5	19309L
Springdale NS	Dublin 5	18646B
St. Brigids Boys NS Howth Road	Dublin 5	19308J
St. Brigids Convent NS Killester	Dublin 5	16792C
St. Davids CBS	Dublin 5	60471F
St. Eithnes Senior GNS	Dublin 5	18969C
St. John Of God NS	Dublin 5	19920A
St. Malachys BNS	Dublin 5	18968A
St. Marys SS Brookwood Meadow	Dublin 5	60791A
St. Michaels Hse Sp Sch	Dublin 5	19373U
St. Monicas NS	Dublin 5	19037E
Gonzaga College	Dublin 6	60530S
Ranelagh Multi Denom NS	Dublin 6	19928Q
Rathgar NS	Dublin 6	14717B
Sandford Park School Ltd	Dublin 6	60640C
Scoil Naisiunta Stratford	Dublin 6	16966J
St. Josephs Boys NS	Dublin 6	09750S
St. Louis High School	Dublin 6	60890C
Stratford College	Dublin 6	61020A
Harolds Cross NS	Dublin 6W	19924I
Our Ladys School	Dublin 6W	60860Q
St. Clares Convent NS	Dublin 6W	16651H
Templeogue College	Dublin 6W	60562I
St. Pauls CBS	Dublin 7	60430O
Christ The King I G	Dublin 7	17459U
Dominican Convent Girls	Dublin 7	17465P
Educate Together NS	Dublin 7	20131D
Fionnbarra Naofa BNS	Dublin 7	17464N
North Dublin Muslim NS Project	Dublin 7	20152L
Presentation Primary School Georges Hill	Dublin 7	05933G
SN Eoin Bosco Nai Buac	Dublin 7	18632N
Powerscourt NS	Dublin 7	09760V
St. Dominics College	Dublin 7	60731F
St. Gabriels NS Cowper Street	Dublin 7	20035H
St. Marys Primary School Dorset Street	Dublin 7	20436C
Colaiste Mhuire Bothar Rath To	Dublin 7	60450U
St. Peters NS Phibsboro	Dublin 7	20091R
Presentation Secondary School Warrenmount	Dublin 8	60792C
Goldenbridge Convent	Dublin 8	07546J
Griffith Barracks Multi D School	Dublin 8	20012S
Presentation Primary School Blackpitts	Dublin 8	13611D
St. Brigids Primary School The Coombe	Dublin 8	16786H
St. Jamess Primary School	Dublin 8	20429F
St. Patricks Cathedral Gs	Dublin 8	60660I
St. Patricks St. Patricks Close	Dublin 8	19480V
Ardscoil Ris Griffith Avenue	Dublin 9	60420L
Ballymana NS	Dublin 9	10675O
Corpus Christi NS	Dublin 9	16860Q
Drumcondra NS	Dublin 9	15895H
Gaelscoil Bhaile Munna	Dublin 9	20015B
Glasnevin NS	Dublin 9	14980Q
Holy Child NS	Dublin 9	20338C
Maryfield College	Dublin 9	60840K

School Name		Roll Number
North Dublin NS Project	Dublin 9	19845M
SN Mhuire Na mBrathar	Dublin 9	16759E
Scoil An Leinbh Iosa B	Dublin 9	17318C
Scoil Chaitriona Bothar Mobhi	Dublin 9	60700R
SN Na Maighdine Muire B	Dublin 9	19302U
St. Columbas Con G & I	Dublin 9	16659A
St. Josephs For Blind NS	Dublin 9	18417J
St. Patricks NS	Dublin 9	11525A
Trinity Comprehensive School	Dublin 9	81017A
Virgin Mary Girls NS	Dublin 9	19303W
Bainrion Na nAingal 2	Dublin 10	18843D
Caritas College	Dublin 10	60732H
Inchicore NS	Dublin 10	20139T
Gaelscoil Ui Earcain	Dublin 11	20220C
Holy Spirit BNS	Dublin 11	19208F
Mother Of Divine Grace	Dublin 11	20059V
SN An Pharoiste	Dublin 11	18205R
SN Naomh Feargal	Dublin 11	18137D
Scoil An tSeachtar Laoch	Dublin 11	19430G
St. Brigids Infant NS	Dublin 11	20029M
St. Brigids Senior Girls School	Dublin 11	19929S
St. Kevins College	Dublin 11	60581M
St. Marys Secondary School Holy Faith Convent	Dublin 11	60770P
New Cross College	Dublin 11	68181N
Assumption Secondary School	Dublin 12	60851P
Loreto College Crumlin Road	Dublin 12	60800V
Marist NS	Dublin 12	18386B
Muire Na Dea Coirle G	Dublin 12	17355I
Muire Og 2 Loreto Con	Dublin 12	17683C
Our Lady Of Mercy Secondary School	Dublin 12	60991I
Our Lady Of Wayside NS	Dublin 12	19764M
SN Naomh Cillin	Dublin 12	16983J
Scoil Eoin Armagh Rd	Dublin 12	19382V
Scoil Iosagain Aughavannagh Road	Dublin 12	17603B
Holy Spirit Senior Primary School	Dublin 12	20464H
Burrows NS	Dublin 13	09642P
Pobalscoil Neasain	Dublin 13	91342R
SN Muire Agus Iosef	Dublin 13	19533Q
Scoil Bhríde Donaghmede	Dublin 13	19473B
St. Laurences NS Brookstone Road	Dublin 13	20437E
St. Marys Secondary School Baldoyle	Dublin 13	60021U
St. Pauls Junior NS	Dublin 13	19471U
St. Fintans High School	Dublin 13	60370W
The Donahies Community School	Dublin 13	91318U
Clochar Loreto NS	Dublin 14	00729F
Da La Salle College	Dublin 14	60310E
Holy Cross NS	Dublin 14	19904C
Mount Anville Secondary School	Dublin 14	60140F
Our Ladys Grove Primary School	Dublin 14	19374W
Rathfarnham Educate Together	Dublin 14	19945Q
Rathfarnham Parish NS	Dublin 14	14939T
St. Attractas Senior NS	Dublin 14	19716B
St. Kilians Deutsche Schule	Dublin 14	60630W
Blakestown Community School	Dublin 15	91316Q
Castaheany Educate Together NS	Dublin 15	20186F
Castleknock College	Dublin 15	60100Q

School Name		Roll Number
Gaelscoil An Chuilinn	Dublin 15	20394M
Hansfield Educate Together NS	Dublin 15	20383H
Hartstown Community School	Dublin 15	91339F
Mary Mother Of Hope Junior NS	Dublin 15	20309S
SN Naomh Mochta	Dublin 15	18778S
Sacred Heart NS Huntstown	Dublin 15	19755L
Scoil Bride C Blanchardstown	Dublin 15	18047C
Scoil Choilm Community NS	Dublin 15	20241K
Scoil Mhuire Sin	Dublin 15	19694R
Scoil Nais Mhuire Sois	Dublin 15	19605P
Scoil Naisunta Chnuacha	Dublin 15	18623M
Scoil Thomais	Dublin 15	19769W
St. Ciarans NS	Dublin 15	19644C
St. Francis Xavier J NS	Dublin 15	19435Q
St. Patricks NS St. Patricks NS	Dublin 15	20130B
St. Philip The Apostle Junior NS	Dublin 15	19601H
St. Philips Senior NS	Dublin 15	19643A
Tyrrelstown Educate Together NS	Dublin 15	20201V
Scoil Phobail Chuil Mhin	Dublin 15	91315O
Ballyroan Boys NS	Dublin 16	03359N
Bishop Galvin NS	Dublin 16	19494J
Bishop Shanahan NS	Dublin 16	19658N
Marley Grange NS	Dublin 16	19574H
Rockbrook Park School	Dublin 16	60321J
St. Attractas Junior NS	Dublin 16	19537B
St. Colmcille Senior NS	Dublin 16	19742C
St. Tiernans Community School	Dublin 16	91343T
Wesley College	Dublin 16	61010U
Whitechurch Nat School	Dublin 16	11638N
SN Bhaile Eamonn	Dublin 16	17953F
Gaelscoil Cholmcille	Dublin 17	20052H
San Nioclas Myra	Dublin 17	17785K
St. Francis Junior NS	Dublin 17	17104G
St. Francis Senior NS	Dublin 17	19668Q
Rosemont School	Dublin 18	60930L
St. Laurence College	Dublin 18	60262T
St. Marys NS Lambs Cross	Dublin 18	02872U
Chapelizod NS	Dublin 20	10653E
Mount Sackville Secondary School	Dublin 20	60120W
Phobailscoil Iosolde	Dublin 20	91302F
Scoil Bride C Palmerstown	Dublin 20	18324C
Scoil Lorcaín B	Dublin 20	18323A
St. Michaels Spec School	Dublin 20	17971H
Colaiste Bride Clondalkin	Dublin 22	60122D
Gaelscoil Na Camoige	Dublin 22	19991A
Moyle Park College	Dublin 22	60121B
Our Lady Queen Of Apostles	Dublin 22	19566I
Scoil Naomh Seosamh Clondalkin	Dublin 22	18655C
St. Bernadettes Junior NS	Dublin 22	19743E
St. Marys Sen NS	Dublin 22	19647I
St. Ronans NS	Dublin 22	19707A
St. Aidans Community School	Dublin 24	91338D
Abacas Special School for Children with Autism	Dublin 24	20378O
Belgard Heights NS	Dublin 24	19541P
Glen Na Smol NS	Dublin 24	17996A

School Name		Roll Number
Old Bawn Community School	Dublin 24	91336W
Scoil Cnoc Mhuire Junior	Dublin 24	19775R
Scoil Iosa Scoil Nais Iosa	Dublin 24	19577N
Scoil Maelruain Junior	Dublin 24	19462T
Scoil Maelruain Senior	Dublin 24	19463V
Scoil Santain	Dublin 24	19646G
St. Annes Primary School	Dublin 24	20173T
St. Dominic's NS	Dublin 24	20468P
St. Josephs Special Sch Balrothery	Dublin 24	19520H
St. Kevins Boys	Dublin 24	19465C
St. Kevins Girls	Dublin 24	19466E
St. Killians Junior School	Dublin 24	19556F
St. Marks Community School	Dublin 24	91332O
St. Marys School	Dublin 24	18411U
St. Thomas Junior NS Jobstown	Dublin 24	19702N
St. Thomas Senior NS	Dublin 24	19765O
Co Galway		
Ardscuil Mhuire Mackney		62890M
Attymon NS		16121B
Baile Mor Siol Anmcadha		17170T
Ballyconeely NS		19290Q
Barnaderg Central Sch		19275U
Bunscoil Naomh Chuana		12782C
Bushy Park NS		13856K
Calasanctius College		63100I
Cappatagle Central Sch		19506N
Carnain NS		14031N
Ceathrú Na nGarrdhanta		17631G
Clonberne Central Sch		19388K
Colaiste Einde		62981P
Colaiste Mhuire Ballygar		62900M
Dominican College Taylors Hill		62990Q
Esker NS		01000E
Gaelscoil Iarfhiltha		20061I
Glinsk NS		19841E
Gort Community School		91498C
Gortanumera NS		08379V
Kilchreest Central Sch		19544V
Kilconly NS		15475I
Kiltormer NS		01328P
Mean Scoil Mhuire		63010H
Mercy College Woodford		63171I
Muire Na Dea Comhairle		17647V
Newtown NS Newtown		20280U
Nioclas Naofa		19744G
Portumna Community School		91413O
Presentation College Currylea		63170G
Presentation Secondary School Presentation Rd		63000E
Scoil An Chroi Naofa		20042E
Scoil Bhreandain Naofa		17870B
Scoil Bhride An Cnoc Bhreac		17934B
Scoil Bride Brierfield		18309G
Scoil Croi Iosa		01013N
Scoil Ide Salthill		18634R
Scoil Mhuire An Tuairín		11261P
Scoil Mhuire Clarinbridge		19965W

School Name	Roll Number
Scoil Mhuire Doire Glinne	18252D
Scoil Mhuire Maigh Cuilinn	19529C
Scoil Mhuire Oranmore	13365O
Scoil Muire Naofa	17877P
Scoil Naomh Iosef Rathun	13914V
Scoil Phobail Mhic Dara	91411K
Seamount College	63050T
SN Aindreis Naofa Liathdruim Coill Breac	03607G
SN An Ard Mhoir	10591I
SN An Cillin Ballyshrule	13665D
SN An Droma Ballinakil	17331R
SN An Fhairce	14712O
SN Ard	14421D
SN Ard Raithin	17007I
SN Baile Atha N Riogh	17280D
SN Baile Nua	15331H
SN Breandain Naofa Ath Cinn	17648A
SN Briocain	17463L
SN Caladh Na Muc	17655U
SN Cathair Geal	17807R
SN Cill Cuile	06044D
SN Cill Solain	18113M
SN Cillinin	18268S
SN Cronain	17645R
SN Fhursa Nile Lodge	16937C
SN Iomair Naofa	17529P
SN Leitirgeis	09833W
SN Lorcaín Naofa	17490O
SN M An Croi Gan Smal	18490T
SN Muire Gan Smal Beal Atha Na Sluagh	17198S
SN Muire Gan Smal Camas	11290W
SN Muire Gan Smal Cladach Dubh	18608Q
SN Muire Letterfrack	13621G
SN Na Coille Glaise	10863P
SN Na Naomh Uile Cleggan	13821O
SN Naomh Antoine	12095G
SN Naomh Ciarain	17574U
SN Naomh Padraig An Chloch Bhreac	12106I
SN Naomh Padraig Tully	14420B
SN Naomh Treasa Caiseal	17660N
SN Naomh Treasa Killure	10095T
SN Seamus Naofa Bearna	19803T
SN Seosamh Naofa	17444H
SN Tir Na Cille	19357W
SN Tuairini	13415D
SN Tullach Ui Chadhain	08446K
St. Brendans NS Loughrea	15835M
St. Brendans NS Portumna	19996K
St. John The Apostle Knocknacarra NS	20108I
St. Oliver Plunketts NS Newcastle	19449E
St. Olivers Child Education & Development Centre	20330J
St. Pauls	63101K
St. Teresas Special School	20328W
The Glebe NS Aughrim	15900U
Tirellan Heights NS	19795A

School Name	Roll Number
Co Kerry	
Aghacasla NS	14767Q
Aghatubrid NS	09878V
Ballyduff NS	20478S
Boheshill Mixed	16744O
Cahorreigh NS	17365L
Castledrum NS	09209B
Castlegregory Mixed NS	11746Q
CBS Secondary School	61440W
Cil Conla NS	18214S
Clochar Daingean	00538V
Clogher Mixed NS	12354E
Colaiste Ide	61301I
Coolard Mixed NS	12587E
Crochan Naofa NS	10239R
Curraheen Mixed NS	15978L
Curranes NS	09938N
Derryquay Mixed NS	15878H
Douglas NS	12875J
Eiltin Naofa	19461R
Faha NS	11405N
Fibough NS	18756I
Firies Mixed NS	15945T
Gaelscoil Faithleann	19941I
Glounaguillagh NS	01583I
Holy Cross Primary School	19487M
Holy Family NS Rathmore	20111U
Kilgarvan Central Schl	19458F
Kilgobnet NS	07841L
Kiltallagh NS	17161S
Lauragh NS	08530W
Listowel Presentation Primary	04062S
Loughfouder NS	14366V
Loughguitane NS	10049M
Mean Scoil Naomh Ioseph	61260U
Meanscoil Phadraig Naofa	61250R
Mercy Secondary School Mounthawk	68070E
Nano Nagle Nschool	19548G
Pobalscoil Chorca Dhuibhne	91511O
Presentation Secondary School Listowel	61380H
Presentation Secondary School Tralee	61450C
Raheen NS	09304S
Scoil An Fhail Mor	12701W
Scoil Atha Na Mblath	11363A
Scoil Barr Dubh	05970M
Scoil Bhríde Scartlea	10050U
Scoil Caitlin Naofa	16779K
Scoil Chorp Christ	10775S
Scoil Christ Ri Drumnacurra	18573A
Scoil Easa Dhuibhe	10501E
Scoil Eoin Balloonagh	13615L
Scoil Eoin Tahilla	05348S
Scoil Iosagain	20196I
Scoil Mhuire Agus nTreasa	20147S
Scoil Mhuire B	12832O

School Name	Roll Number
Scoil Mhuire Sc Mhuire Brosnach	18283O
Scoil Mhuire Tobar Mui Doire	13530D
Scoil Naomh Carthach	07990F
Scoil Naomh Erc	18590A
Scoil Naomh Micheal Sneem	08251S
Scoil Nuachabhail	10326M
Scoil Paroisteach	18233W
Scoil Phobail Sliabh Luachra	91504R
Scoil Realt Na Mara Killorglin	12820H
SN An Chlochán	14987H
SN An Chuilleanaig	17710C
SN An Fhossa	17012B
SN An Ghleanna Baile An Sceilg	08147A
SN Breandan Naofa Cathar Ui Mhodhrain	16898S
SN Ceann Tra Meascaithe	15592M
SN Cill Cruinn	17072T
SN Cill Luraigh	18184M
SN Eoin Baiste Garrai Na Dtor	19986H
SN Gleann Beithe	18414D
SN Lios Teilic	09260B
SN Mhaolcheadair	06227L
SN Muire Gan Smal Na Corra	08687J
SN Realt Na Mara Tuath O Siosta	19448C
SN Sliabh A Mhadra	03132I
SN Treasa Naofa Mixed	15033W
SN Uaimh Bhreanainn	17646T
Spa NS	18702I
St. Brendans NS Fenit	19659P
St. Brigids Secondary School	61340S
St. Finians	16014A
St. Johns NS Kenmare	20197K
St. Josephs Secondary School Doon Road	61220I
St. Michaels College Listowel	61370E
Tarbert Comprehensive School	81006S
The Intermediate School	61360B
Tralee Educate Together NS	20158A
Co Kildare	
Allenwood BNS	16813H
An Linbh Iosa	19597T
Ardscoil Na Trionoide	68077S
Athy Model School	06209J
Ballyroe Central NS	19425N
Brannoxtown NS	16817P
Caragh NS	18654A
Colaiste Naomh Mhuire	61730I
Gael Cholaiste Chill Dara	68072I
Gaelscoil Atha I	20192A
Gaelscoil Chill Dara	20023A
Holy Family Secondary School	61682A
Kilberry NS	13165G
Kildare Town Community School	91530S
Killashee MultiDenominational NS	20087D
Mercy Convent Primary School	15040T
Newbridge College	61680T
San Carlo Junior NS	19653D
San Carlo Senior NS	19875V

School Name	Roll Number
Saplings Special School Kilwarden	20376K
Scoil Bhride Leixlip	19407L
Scoil Bhride NS Rathangan	18018S
Scoil Bhride Nurney	16345A
Scoil Bride Athgarvan NS	13350B
Scoil Chonnla Phadraig	15870O
Scoil Chorbain	17254C
Scoil Cui Dhalaigh	19680G
Scoil Mhuire Community School	91372D
Scoil Na Naomh Uilig	20271T
Scoil Phadraig Naofa An Tom Ard	16705E
Scoil Ui Fhiaich	20058T
SN Baile Mhic Adaim	18092H
SN Baile Roibeaird	18430B
SN Bride Crochta Greine	18031K
SN Bride Lackagh	18179T
SN Brighde Kill	17662R
SN Coill Dubh	18096P
SN Ide	17650K
SN Na Maighdine Mhuire	18287W
SN Naomh Lorcaín	18063A
SN Rath Mor	01821V
SN Scoil Treasa	18445O
SN Tir Mochain	18666H
St. Brigids Kildare Town Primary School	20427B
St. Brigids NS Kilcullen	19675N
St. Conleths & Marys NS	17872F
St. Conleths NS	18449W
St. Johns NS Monasterevan	12182B
St. Laurences NS Crookstown	09414C
St. Laurences NS Sallins	08099P
St. Patricks BNS	19796C
St. Patricks NS Johnstownbridge	18130M
St. Patricks NS Morrinstown	13328I
St. Pauls Secondary School Monasterevin	61702D
St. Wolstans Community School	91505T
Straffan NS	18644U
Co Kilkenny	
Bennettsbridge Mixed	16406R
Carigeen NS	15340I
Church Hill Mixed NS	05927L
Clontubrid Mixed NS	16865D
Colaiste Eamann Ris	61510R
Community School Castlecomer	91360T
Graig Na Manach Buac	16311G
Kilkenny School Project	19905E
Kilmacow NS	20443W
Kilmoganny Mixed NS	07481H
Lisdowney NS	00788V
Loreto Secondary School Granges Road	61580P
Meanscoil Na Mbraithre Criostai	61550G
Owning NS	16430O
Presentation Convent GNS	05437R
Presentation Convent NS	10835K
Ringville NS	06621P
School Of The Holy Spirit Special School	19523N

School Name	Roll Number
Scoil An Chroi Ro Naofa Urlingford	19930D
Scoil Iognaid De Ris	17867M
Scoil Mhichil Naofa	17758H
Scoil Mhuire Presentation Convent	19925K
Scoil San Lionard	16827S
Skeaghvastheen NS	16140F
SN Baile An Fhasaigh	18257N
SN Bhridhe	17566V
SN Bhrighde Cuan	17174E
SN Chiaran Naofa	17589K
SN Cholmcille Inis Teog	17073V
SN Mhuire Lourdes Buac	16887N
SN Muire Bealach Gabhrain	18064C
SN Naomh Chiarain	17339K
SN Naomh Colmain Clarach Higginstown	16116I
SN Naomh Padraig Mixed	17628R
SN Naomh Padraig	16875G
SN Shan Nioclas	18660S
SN Shean Bhoth	17471K
SN Teampall Loiscithe	17675D
SN Tobair Eoin Baisde	17905R
St. Aidans NS Kilmanagh	19344N
St. Beacons NS	19976E
St. Canices Central NS	19626A
St. Johns Infants NS	17108O
St. Johns Senior NS	20011Q
St. Kierans College	61560J
St. Michaels NS Co Kilkenny	01300Q
St. Patricks Special School	19383A
Wandesforde Mixed NS	14476F
Co Laois	
Abbeyleix Sth NS	14260F
Ardlios NS	18532J
Bhride NS	18265M
Castletown NS Portlaoise	20169F
Colaiste Iosagain Portarlinton	68068R
Cosby NS	10544W
Faolan Naofa NS	18547W
Fraoch Mor NS	18150S
Kiladooley Mixed NS	12692B
Maryboro NS	14838N
Mhuire Fatima NS	18368W
Muire Naofa Castlecuffe	17883K
Naomh Padraig NS Doire Liaim Oig	18513F
Our Ladys Meadow National School	20065Q
Paddock NS	13173F
Rathdomhnaigh NS	18075H
Rosenallis NS	17493U
Rush Hall Mixed NS	12231L
Scoil Bhride Ballyroan	01556F
Scoil Bhride Cluain Na Sli	20118L
Scoil Bhride Rathdowney	20071L
Scoil Chomhgain Naofa	17617M
Scoil Chríost Rí Presentation Secondary School	63451O
Scoil Mhuire Muigheo	17271C
Scoil Mhuire Wolfhill	17441B

School Name	Roll Number
Scoil Padraig	17064U
SN An Chroi Ro Naofa	13386W
SN Naomh Colmcille Errill	18780F
SN Naomh Eoin Portarlinton	18641O
St. Fintans NS Mounthraath	07636K
St. Josephs NS Borris In Ossory	07442U
St. Pauls NS St. Pauls Rectory	19369G
The Kolbe Special School	20100P
Co Leitrim	
Aughavas NS	14339S
Aughawillan NS	16932P
Ballaghameehan NS	13908D
Ballinamore Community School	91519H
Community School Carrick On Shannon	91496V
Drumeela NS	14898I
Faitima NS	18741S
Glebe NS Largy	17206O
Leitrim Mixed NS	01125B
Manorhamilton BNS	17233R
Mastersons NS	08390J
Scoil Mhuire Carrick On Shannon	20432R
SN Beal An Atha Mhoir	18656E
SN Brid Naofa	13614J
SN Mhic Diarmada	18589P
St. Patricks NS	19423J
St. Brides	19519W
St. Clares Comprehensive School	81013P
St. Hughs NS	18181G
The Hunt NS	08673V
Co Limerick	
An Mhodh Scoil	19894C
Ardscail Ris North Circular Rd	64201T
Askeaton Senior NS	18530F
Athea Nschool	15685T
Athlaccá NS	17155A
Ballylanders NS	14305B
Ballysteen NS	07900B
Bohermore NS	08342V
Carnane Mixed NS	09132P
Catherine McAuley Sp S	18692I
Crescent College Comprehensive	81014R
Croagh NS	02007A
Donoughmore NS	16118M
Fedamore NS	14067L
Gaelscoil Chaladh An Treoigh	20148U
Gaelscoil O Doghair	19883U
Gaelscoil Sairseal	19956V
Garrydoolis NS	10991B
Glengurt NS	07317R
Glenstal Abbey School	64150F
Granagh NS	09927I
J F K Memorial School	18991S
John The Baptist Community School	91502N
Kilbehenny NS	17298W
Kildimo NS	06516S
Knockea NS	06539H

School Name	Roll Number
Laurel Hill Colaiste FCJ	64270P
Laurel Hill Secondary School FCJ	64260M
Limerick School Project	19934L
Mahoonagh NS	11422N
Martinstown NS	09915B
Meenkilly NS	16239B
Milford Grange NS	19800N
Nicker NS	14231V
Oola NS	17184H
Our Lady Of Lourdes NS	19667O
Our Ladys Abbey	09296W
Rathkeale NS 2	10929T
Red Hill School Asd	20311F
Salesian Secondary School	64280S
Scoil Ailbhe Cathair Ailbhe	18030I
Scoil An Spioraid Naomh	15680J
Scoil Baile An Aird	17364J
Scoil Chaitriona	20233L
Scoil Christ Ri B	19331E
Scoil Cill Colmain	17138A
Scoil Cre Cumhra	17101A
Scoil Ide Corbally	18872K
Scoil Ide Naofa	18426K
Scoil Iosagain Sraid Seasain	16910F
Scoil Mhuire & Ide	64170L
Scoil Mhuire Beal An Atha	18260C
Scoil Mocheallog	20193C
Scoil Moin A Lin	17937H
Scoil Na Naoinean	16913L
Scoil Na Trionoide Naofa Doon	68121S
Scoil Nais Cnoc Aine	17212J
Scoil Naomh Ide Ath Na Fuinnseoige	16896O
Scoil Naomh Iosaf Adare	16712B
Scoil Naomh Iosef Rathkeale	18653V
Scoil O Curain B	17951B
Scoil Padraig Naofa B Dublin Road	16443A
Scoil Padraig Naofa C	16444C
Scoil Pol	64130W
Shanagolden NS	17438M
SN Ailbhe	07857D
SN Cill Lachtain	18708U
SN Cnoch A Deaga	11809O
SN Fiodhnach	04469C
SN Gleann Na Gcreabhar	17981K
SN Lios Na Groi	18516L
SN Loch Guir	07117J
SN Ma Rua	18600A
SN Molua B	14075K
SN Muire Na Heireann	19332G
SN Naomh Iosef	19272O
SN Naomh Padraig Abbeyfeale	12368P
SN Toinn An Tairbh	18367U
St. Augustines Spec Sch	19587Q
St. Brigids NS	19475F
St. Johns Convent	06936R

School Name	Roll Number
St. Josephs Convent Newcastle West	12975N
St. Josephs Drumcollogher	19966B
St. Marys NS Island Road	20405O
St. Michaels	12834S
St. Michaels NS CBS Grounds	15320C
St. Munchins College	64240G
St. Nicholas Church Of Ireland School	08926B
Templeglantine NS	02358G
Villiers Secondary School	64310B
Co Longford	
Cloontagh Mixed NS	14650S
Cnoc Mhuire	63730S
Colehill Mixed NS	14672F
Forgney NS	00860D
Gaelscoil An Longfoirt	20083S
Longford Mixed NS	12683A
Mercy Secondary School Ballymahon	63710M
Moyne Community School	91436D
Naomh Earnain NS	18258P
Samhthann NS	17561L
SN An Leana Mor	05115S
SN Cnoc An Mharcaigh	07518E
SN Naomh Colmcille Aughnaccliffe	19296F
SN Naomh Mhuire Baile Nua An Chaisil	19171I
SN Naomh Treasa Clontumpher	19279F
St. Johns NS Ballinallee Road	13313S
St. Mels	19467G
St. Mels College	63750B
St. Patricks Ballinamuck	19975C
St. Patricks NS Longford	19353O
Stonepark NS	14386E
Tashinny NS	10223C
Co Louth	
Baile An Phusta NS	01554B
Colaiste Ris	63880O
Dromin NS	06576N
Dromiskin Mixed NS	16760M
Dun Dealgan NS	14069P
Dundalk Grammar School	63920A
Kilcurley Mixed NS	16749B
Louth Mixed NS	01553W
Muire Na nGael NS	19598V
Our Ladys College	63850F
Rathmullan NS	19479N
Sacred Heart Secondary School Sunnyside	63860I
Sc Na Gcreagacha Dubha	15285D
Scoil Dairbhre Mixed	17315T
Scoil Fhursa	17550G
Scoil Naisiunta Naomh Feichin	16208N
Scoil Naomh Fainche	14578N
SN An tSlanaitheora B	19246N
SN Ard Mhuire C	19215C
SN Brighde Fochaird	18391R
SN Chaoimhin Naofa	18019U
SN Chill Sarain	14207B

School Name	Roll Number
SN Columcille	01434O
SN Muire Na Trocaire	18099V
SN Muire Pairc Na Rian	18101F
SN Mullach Bui	02793B
SN Naomh Peadar Bolton Street	11072M
SN Padraig Baile Ui Ir	19223B
SN San Nioclas Tigh Banan	18126V
SN Tulach Aluinn	17726R
St. Brighids Special Sch	18772G
St. Josephs CBS Newfoundwell Rd	63840C
St. Josephs NS Avenue Road	19673J
St. Louis Secondary School Dun Lughaidh	63910U
St. Marys College Nicholas Street	63890R
St. Marys Diocesan School	63841E
St. Marys Parish Primary School	20205G
St. Pauls Senior NS	19678T
St. Vincents Secondary School Seatown Place	63900R
Walshestown NS	03787L
Co Mayo	
Ballindine Boys NS	01676P
Ballyhaunis Community School	91461C
Ballyvary Central NS	19402B
Barnacarroil Central NS	19710M
Barnatra NS	14188A
Beacan Mixed NS	13659I
Brackloon NS	04796R
Carracastle Central NS	19651W
Carrakennedy NS	15866A
Claremorris Boys NS	19915H
Cloghans Hill NS	17922R
Cloghans NS	16170O
Clogher NS	17482P
Cloonlyon NS	12936D
Colaiste Cholmain Claremorris	64610N
Colaiste Mhuire Tuar Mhic Eadaigh	64691Q
Convent Of Mercy NS Castlebar	18694M
Dookinella NS	14873P
Drumgallagh NS	18002D
Gaelscoil Na Gceithre Maol	20084U
Geesala Central School	19776T
Glencorribns	17874J
Gortjordan NS	14534Q
Holy Trinity NS Newport Road	08302J
Irishstown NS	14808E
Jesus & Mary Secondary School Gortnor Abbey	64630T
Kilmovee In S	13080V
Knock NS	16122D
Knockanillo NS	16562I
Lecanvey NS	13797U
Lisaniska NS	16021U
Mount Pleasant NS	13500R
Mount St Michael Convent Of Mercy	64620Q
Muirisc NS	16832L
Our Ladys Secondary School Belmullet	64570E
Scoil Na gCaoillini	02912G
Scoil Neifinn	20431P

School Name	Roll Number
Scoil Phadraic	20230F
Scoil Raifteiri	19832D
SN Achaidh An Ghlaisin	18594I
SN An tSraith	13383Q
SN Athracht Nfa Buach	18003F
SN B Curnanool	14497N
SN Beal An Mhuirthead	17923T
SN Brighde Tuirin	16756V
SN Ceathru An Chlochar	12816Q
SN Cill Mhuire	14400S
SN Cnoc Ruscaighe	18712L
SN Coill A tSidheain	12626L
SN Croi Muire	17727T
SN Dumhach	18082E
SN Gleann A Chaisil	13222P
SN Gleann na Muaidhe	13882L
SN Lainn Cille	16904K
SN Na Craobhaighe	14671D
SN Na Haille Ballinrobe	12350T
SN Naomh Brid C	18503C
SN Naomh Padraig	17129W
SN Naomh Padraig B	18506I
SN Padraig Naofa Louisburgh	20037L
SN Pol A Tsomais	16283E
SN Realt Na Mara Mulranny	17176I
SN Tamhnighan Fheadha	12938H
SN Tighearnain Naofa	17098O
SN Toin Na Gaoithe	16113C
St. Anthony's Special Sc	19248R
St. Brides Special Sch	19375B
St. Colmans NS Dernabrock	19798G
St. Columbas NS Inishturk	13174H
St. Dymnas Spec School	19387I
St. Johns NS	15539I
St. Josephs NS Ballinrobe	20089H
St. Josephs Secondary School	64640W
St. Louis Community School	91494R
St. Marys Secondary School Ballina	64520M
St. Nicholas Spec Sch	19773N
St. Patricks NS Clare Island	13311O
St. Peters NS Snugboro	19916J
Swinford NS	19951L
Tavrane Central NS	19808G
Co Meath	
Ashbourne Community School	91495T
Athboy Community School	91517D
Ballinlough NS Kells	09238I
Boyne Community School	91508C
Bride Naofa NS	15104T
Carricleck NS	14348T
Castlejordan Central NS	19300Q
Castletown NS Navan	19292U
Cooile NS	18051Q
Drumbarragh NS	10801Q
Dunboyne Junior NS	20032B
Dunboyne Senior NS	20033D

School Name	Roll Number
Eureka Secondary School	64410F
Gaelscoil Na Cille	19779C
Kells Parochial NS	05062A
Kilbeg NS	11039O
Kilbride NS Clonee	16825O
Killyon NS	07120V
Kilmainham Wood NS	17123K
Kilmessan Mixed NS	04210H
Loreto Secondary School St Michaels	64370T
Mercy Convent NS	16100Q
Navan Educate Together NS	20164S
Newtown NS Ardee	03275H
Ogrowney NS	17623H
Scoil An Spioraid Naoimh	20017F
Scoil Na Rithe	19867W
Scoil Nais Aitinn Bhui	17741N
Scoil Nais Deaglain	19486K
Scoil Nais Finin Naofa	16067V
Scoil Nais Mhuire Naofa	17742P
Scoil Naomh Barra	19253K
SN Bheinín Naofa C	17840P
SN Bhrighde Baile Corr	17162U
SN Caitriona Naofa Baile Oirthir	18174J
SN Dun Uabhair	17856H
SN Mhuire Baile Uí Earain	18037W
SN Mhuire Cul Ronain	18429Q
SN Mhuire Ma Nealta	17213L
SN Mhuire Naofa Rathfeigh	17964K
SN Na Trionoide Naofa	18106P
SN Naomh Padraig Slane	18040L
SN Naomh Padraig Stamullen	18044T
SN Naomh Treasa Bellewstown	18413B
SN Nmh Sheosamh	17986U
St. Ciarans Community School	91456J
St. Finian NS	18195R
St. Josephs NS Mulhussey	18887A
St. Josephs Secondary School, Navan	64360Q
St. Louis NS	15483H
St. Marys Special School	19560T
St. Nicholas Primary School	16655P
St. Oliver Plunkett NS Navan	19476H
St. Pauls NS	20215J
St. Stephens NS Johnstown	20179I
Co Monaghan	
Annalitten NS	13632L
Castleblayney Cent NS	19737J
Corcaghan NS	16129R
Corr A Chrainn NS	18028V
Drumacruttin NS	10282S
Drumcorrin NS	19703P
Edenmore NS	20337A
Gaelscoil Lorgan	20327U
Latnamard NS	16769H
Latton	19434O
Monaghan Collegiate School	64830E
Naomh Micheal	15142E

School Name	Roll Number
Our Ladys Secondary School Castleblayney	64770M
Patrician High School	64750G
Rockcorry NS	06028F
Scoil Bhrighde Silverstream	18256L
Scoil Mhuire BNS	17686I
Scoil Mhuire Glasloch	18401R
Scoil Mhuire Machaire Airne	09186P
Scoil Naoimh Eanna	05501A
Scoil Rois	19857T
SN Ath Na BhFearcon	18023L
SN Blaithin Iosa	16968N
SN Cholmcille Taithe Bui	18820O
SN Comhghall	17776J
St. Dymnás NS	19738L
St. Josephs NS Knockatallon	20067U
St. Louis Girls NS	00359V
St. Louis Infant School	18494E
St. Louis Secondary School	64820B
St. Louis Secondary School Carrickmacross	64760J
The Billis NS	20246U
Co Offaly	
Arden Boys NS	19713S
Ceann Eitigh NS	16802C
Charleville NS	10353P
Clara Convent NS	13118U
Clonbullogue NS	15325M
Cloneyhurke NS	15923J
Colaiste Choilm Tulach Mhor	65610S
Croinchoill NS	18267Q
Daingean NS	16620T
Edenderry 2 NS	15638K
Gaelscoil An Eiscir Riada	19990V
Gallen Community School	91515W
Geashill 1 NS	09191I
Killina Presentation Secondary School	65630B
Mercy Primary School	03220F
Naomh Mhuire NS	17616K
Scoil Bhríde Primary School	20267F
Scoil Colmain Naofa	17746A
Scoil Mhuire Tullamore	18057F
SN Caoimhin Naofa	18331W
SN Mhanachain	17540D
SN Mhuire Bainrioghan	17336E
SN Mhuire Cul An Airne	18795S
SN Muire Bainrion	18364O
SN Naomh Brighde Buach	18524K
SN Naomh Cholmchille	17508H
SN Naomh Eoin An Rath	02413L
SN Naomh Philomena	16928B
SN Naomh Seosamh Tullamore	18797W
SN Osmann	07949I
SN Peadar Agus Pol Ath An Urchair	18068K
SN Ros Com Rua	18537T
SN Seosamh Gortnamona	07191V
SN Sheosaimh Naofa	17637S
St. Ciarans Mixed NS	16435B

School Name	Roll Number
St. Cronans Mixed NS	12294M
St. Cynocs NS	20289P
St. Marys NS Cloghan	20068W
St. Marys Secondary School Edenderry	65582Q
Stbrendans Community School	91491L
Tullamore Educate Together NS	20189L
Co Roscommon	
Abbeycarton NS	19809I
Attyrory NS	16816N
Ballinlough NS Roscommon	11943S
Ballintubber NS Castlerea	16334S
Carrick Mixed NS	16009H
CBS Roscommon	65080P
Clochar Na Trocaire	15043C
Cloonbonnif NS	11242L
Clooncagh NS	16291D
Grange NS	15584N
Mns Cluain Tuaiscirt	18116S
N Micheal Agus Padraig	19720P
Naomh Atrachta	18182I
Scoil Mhuire Ballyleague	18061T
Scoil Mhuire Strokestown	65100S
SN An Gleann Duibh	18626S
SN Ard Cianain	17054R
SN Cill Trostain	17353E
SN Cnoc An Samhraidh	12754U
SN Cruachain	18012G
SN Mhuire Lourdes	18536R
SN Naomh Ceitheach	16815L
SN Naomh Ciaran	19368E
SN Naomh Padraig Beal Atha Fearnan	13978B
SN Naomh Padraig Beal Atha Na Mbuilli	15045G
SN Naomh Padraig Scrabbagh NS	11201U
SN O Dubhlain	17849K
SN Padraig Naofa Dungar	17748E
SN Paroisteach	17329H
SN Pol Naofa	01086R
SN Rath Aradh	17100V
St. Josephs Boys NS Boyle	15628H
St. Marys Primary	17808T
St. Nathys College	68067P
Strabaggan NS	19257S
Taughmaconnell NS	15614T
Tulsk NS	16034G
Co Sligo	
Ballintogher NS	02013S
Carbury NS	19495L
Carn NS	12537M
Carraroe NS	14636B
Cliffoney NS	16136O
Cloonacool NS	04802J
Colaiste Mhuire	65140H
Coolbock NS	16781U
Enniscrone NS	13940W
Gaelscoil Chnoc Na Ré	20044I
Holy Family School Tubbercurry	20019J

School Name	Roll Number
Jesus & Mary Secondary School Enniscrone	65150K
Kilglass NS	15571E
Killaville NS	15431L
Killeenduff NS	09691F
Kilross NS Ballintogher	16044J
Leaffoney NS	15496Q
Mercy College Chapel Hill	65181V
Our Lady Of Mercy NS Pearse Road	19985F
Owenbeg NS	03924S
Rathcormack NS	19408N
Schoil Mhuire Agus Iosaf	20122C
Scoil Croi Naofa	20113B
Scoil Eoin Naofa	19974A
Scoil Naomh Aodain	19392B
Sligo Grammar School	65190W
Sligo Project School	19910U
SN Baile An Luig	17599N
SN Clochog	18543O
SN Cnoc Mionna	18334F
SN Cul Fada	18298E
SN Lissara Naofa	17774F
SN Molaoise	18575E
SN Muire Gan Smal Droimban Curraigh	19389M
SN Mullach Rua	17967Q
SN Naithi Naofa	04487E
SN Naomh Iosef Ard Chill	18592E
SN Naomh Mhuire Ceis Chorainn	15342M
SN Padraig Naofa Geevagh	17283J
SN Pairc Ard	18715R
SN Realt Na Mara Rosses Point	17641J
SN Ronain Naofa	12767G
Soeoy NS	18053U
St. Attractas Community School	91512Q
St. Brendans NS Cartron	19826I
St. Cecilians School	19206B
St. Josephs NS Culleens	12140I
St. Patricks NS Coolgagh	19942K
Summerhill College	65170Q
Ursuline College	65180T
Co Tipperary	
Annacarty NS	18528S
Ardfinnan NS	16077B
Ardscuil Na Mbraithre	65320J
Ballycahill NS	01569O
Ballylooby NS	18582B
Ballyneale NS	18085K
Bansha NS Bansha	19689B
Carrig NS Ballycommon	16276H
Cashel Deanery	19696V
Castle Iny NS	17653Q
CBS Thurles	65450W
Clochar Na Toirbhirte Presentation Convent	11872V
Clonmore NS	12540B
CloughJordan No 1 NS	19422H
Cormaic Special School	19230V
Cullen NS	07245S

School Name	Roll Number
Eochaille Ara NS	16810B
Gaelscoil Durlas Eile	19968F
Gaile NS	15299O
Grangemockler NS	18501V
Gurtagarry NS	11384I
Holy Trinity NS Rocklow Road	20355C
Killusty NS	16111V
Lisnamrock NS	11453B
Lisvernane NS	19294B
Loreto Secondary School Coleville Rd	65330M
Monard NS	00606M
Mount Bruis NS	15157R
Moyglass NS	04075E
Naomh Pdraig Junior	19879G
Naomh Pdraig Senior	19880O
New Inn BNS	05144C
Newtown NS Solohead	08316U
Our Lady's National School, Ballingarry	20475M
Our Ladys Secondary School	65440T
Patrician Presentation	65350S
Powerstown NS	17779P
Presentation Primary School Clonmel	12180U
Presentation Secondary School Ballingarry	65240L
Presentation Secondary School Thurles	65460C
Rear NS	12124K
Sacred Heart Primary School	18435L
San Isadoir	02670I
Scoil Angela	18135W
Scoil Aonghusa	19615S
Scoil Mhuire Borrisokane	20062K
Scoil Mhuire Caislean Nua	18538V
Scoil Mhuire Gan Smal	13404V
Scoil Mhuire Greenhill	65280A
Scoil Mhuire Lismackin	19640R
Scoil Na Mbraithe Tipperary	17276M
Scoil Naomh Cualan	20451V
Silvermines NS	15696B
Slieveardagh NS	11470B
SN An Droma Thurles	18322V
SN An Grainseach	18062V
SN Baile An Atha	18207V
SN Baile An Iubhair	17511T
SN Baile Na Hinse	17296S
SN Buirgheas	18164G
SN Chaoimhghin	18343G
SN Chluainin	17694H
SN Chuir Doighte	17783G
SN Cill Na Naomh	18559G
SN Cill Siolain	18486F
SN Gort Na Huaighe	17580P
SN Iosef Naofa Cor An Bhile	18345K
SN Iosef Naofa Eaglais	18443K
SN Iosef Naofa Templemore	17731K
SN Lios An Halla	18465U
SN Lua Naofa	17608L
SN Mhuire Na Mbraithe Carrick On Suir	16725K

School Name	Roll Number
SN Mhuire Na Trocaire	10120P
SN Michil Naofa Mullinahone	15362S
SN Muire Na nAingéal	12349L
SN Na Haille An Mhoin Ard	17799V
SN Na Hinse	18350D
SN Naomh Peadar Horse & Jockey	04005G
SN Naomh Sheosamh Toomevara	17498H
SN Phadraig Naofa Pairc Na Coille	17850S
SN Rath Chaomhghin	17542H
SN Rath Eilte	18396E
SN Rois Mhoir	17620B
SN Teampall Doire	18557C
St. Ailbe's NS	20467N
St. Annes SS	65500L
St. Colmcilles Primary School	16979S
St. Francis NS Garryshane	18512D
St. John The Baptist	19692N
St. Josephs CBS Summerhill	65370B
St. Josephs PS	09432E
St. Marys Jnr BNS	16344V
St. Marys NS Nenagh	15778D
St. Marys NS Templemore	15795D
St. Marys Parochial School	17332T
St. Peter & Paul	16729S
The Abbey School	65490L
Thomastown NS	04620D
Tipperary Jnr Boys NS	01285A
Upper Newtown NS	09967U
Ursuline Secondary School Thurles	65470F
Co Waterford	
An Teaghlaigh Naofa	18509O
Ard Scoil Na nDeise	64900W
Ballycurrane NS	07441S
Ballyduff NS Kilmeaden	13635R
Ballymacarberry NS	19345P
Carrickbeg NS	11969N
CBS Mount Sion Waterford	64930I
Christ Church NS	18681D
De La Salle College Newtown	64950O
Gaelscoil Phort Lairge	19853L
Glenbeg NS	15318P
Light Of Christ NS	17525H
Mount Sion CBS NS	19947U
Our Lady Of Good Counsel GNS	12007G
Our Lady Of Mercy NS Stradbally	13020D
Our Lady Of Mercy Secondary School Ozanam St	64971W
Our Lady Of Mercy Senior PS	18689T
Passage East NS	14989L
Presentation Primary School Slievekeale Road	19955T
Rathgormack BNS	15963V
Sc Naomh Eoin Le Dia	18793O
Scoil Choill Mhic Thomaisin	20170N
Scoil Na Mbraithe Dungarvan	64880T
Scoil Naomh Seosamh Dungarvan	16732H
SN An Chlais Mhor	02889O
SN Baile Builearaigh	14679T

School Name	Roll Number
SN Cill Bhriain	17643N
SN Cill Rosanta	01711O
SN Cnoc Machan	18077L
SN Dun Aill	17536M
SN Lios Mor Mochuda	14164J
SN Muire Magh Deilge	18321T
SN Na Bhfiodh	17570M
SN Na Cille	16748W
SN Na Leanai	16818R
SN Naomh Deaglan	18048E
SN Naomh Parthalan	18318H
St. Angelas Ursuline Convent	64990D
St. Johns Special Sch	19282R
St. Marys NS Grange	17997C
St. Marys NS Touraneena	18779U
St. Pauls Boys NS	20219R
St. Saviours NS Ballyeg	19511G
Waterpark NS	20143K
Waterpark College	64940L
Co Westmeath	
Athlone NS	16092U
Baile Coireil NS	16914N
Baile Na Gceallach NS	16868J
Ballinagore Mixed NS	16340N
Ballinahowen NS	19632S
Bl Oliver Plunkett NS	17167H
Castlepollard Mixed NS	05513H
Castlepollard Parocn S	10857U
Cill Cleithe NS	17806P
Cluain Buinne NS	17102C
Colaiste Mhuire Mullingar	63270K
Corr Na Madadh NS	17903N
Crownstown NS	02263S
Diarmada NS	18036U
Drumraney Mixed NS	13571R
Earnain Mixed NS	18598Q
Eoin Naofa NS	17991N
Loch An Ghair NS	18812P
Loreto College Mullingar	63290Q
Mean Scoil An Chlochair	63221U
Mhuire NS	18484B
Milltownpass NS	16304J
Moate Community School	91501L
Naomh Clar NS	18505G
Naomh Micheal NS	17606H
Naomh Muire NS	17743R
Naomh Tomas NS	18591C
Saplings Special School Austin Friar Street	20373E
Scoil Na gCeithre Máistrí	19948W
Scoil Mhuire Teach Munna	18533L
Scoil Na Maighdine Mhuire Pobox 8	18212O
Scoil Na Mbraithre Mullingar	18381O
SN An Chuil	03936C
SN Phoil Naofa	18405C
St. Brigids Primary School An Bhun Scoil	15512L
St. Colmcilles NS	16838A

School Name	Roll Number
St. Feighans Mixed NS	14450K
St. Finians College	63280N
St. Josephs Secondary School Rochfortbridge	63310T
St. Marys NS Gracepark Rd	20073P
St. Peters NS Snr	07722D
Tang NS	08037Q
Co Wexford	
Ballindaggin NS	15962T
Boolavogue NS	18336J
Bunscoil Loreto	16145P
Castlebridge NS	18707S
Christian Brothers Secondary School Thomas St	63640R
Clongeen Mixed NS	16992K
Curracloe NS	14492D
FJC Secondary School	63550Q
Glanbrian NS	13299E
Good Counsel College	63610I
Gorey Central School	19419S
Gorey Community School	91492N
Kilnamanagh NS	13999J
Kiltealy NS	16833N
Loreto Secondary School Spawell Road	63660A
Meanscoil Gharman	68080H
Oulart NS	15419V
Our Lady Of Fatima Special School	19266T
Presentation Secondary School Grogans Road	63661C
Ramsgrange Community School	91431Q
Rathgarogue NS	16023B
Riverchapel NS	15367F
Scoil Ghormain Naofa	17768K
Scoil Mhuire Broadway	19741A
Scoil Mhuire Coolcotts	19739N
Scoil Na Mbraithre New Ross	16741I
Scoil Naisiunta Bhantiarna Lourdes	03633H
SN Abbain	17526J
SN An Ghleanna	17005E
SN Baile An Phiarsaigh	18558E
SN Bearna Na hAille	16828U
SN Caislean Dochrail	17519M
SN Chaomhain Torrchoill	17235V
SN Clochar Mhuire Rosslare	16879O
SN Clochar Mhuire St Johns Road	17373K
SN Coill An Iarainn	17858L
SN Mhuire Ballyhogue	17841R
SN Mhuire Danescastle	14254K
SN Na Scrine	18839M
SN Nmh Brighde	16841M
SN Phadraig Crossabeg	17017L
SN Seosamh Naofa	17800D
St. Canice S Convent	01840C
St. Iberius NS	18824W
St. Josephs NS Donard	17638U
St. Marys CBS Millpark Road	63560T
St. Marys Secondary School Irishtown	63620L
St. Patricks NS Ballyroebuck	12841P
St. Patricks Spec School	19240B

School Name	Roll Number
St. Peters College	63650U
St. Senans NS	08221J
Co Wicklow	
All Saints NS Carnew	14972R
Annacurra NS	17304O
Ballintemple NS Avoca	13224T
Blessington 1 NS	06176U
Blessington Educate Together	20242M
Caoimhin Naofa NS	16924Q
Carnew NS	18242A
Carysfort Mixed NS	14045B
Coolfancy NS	18118W
Donaghmore NS	12413R
East Glendalough School	81016V
Gael Scoil Na Lochanna	20243O
Gaelscoil Na Gcloch Liath	20301C
Gaelscoil Ui Cheadaigh	20016D
Greystones 2 NS	12554M
Jonathan Swift NS	14269A
Kilbride NS Blessington	10683N
Kiltegan NS	12688K
Lacken Mixed NS	10111O
Marino School NS	18281K
Moin An Bhealaigh NS	10131U
Na Coroine Muire Mixed	17826V
Naomh Brid NS	18470N
Padraig Naofa NS Avoca	18198A
Padraig Naofa NS St Patricks Road	15676S
Presentation College Putland Road	61800D
Rathdrum Boys NS	17265H
Scoil An Choroim Mhuire	17576B
Scoil Chualann	19584K
Scoil Mhuire Na Naird	19748O
Scoil Padraig Naofa	17537O
Scoil San Eoin	14829M
Shillelagh No 1 NS	15359G
SN Muire Blessington	17091A
SN Muire Is Gearard	17223O
SN Naomh Padraig Bearna Chle	01782O
SN Nicolais Naofa	17810G
SN Padraig Naofa Curtlestown	18357R
St. Brendans College	61790D
St. Brigids School Greystones	16573N
St. Davids Holy Faith Secondary	61830M
St. Francis NS Newcastle	19734D
St. Gerards School	61811I
St. Johns SNS	20469R
St. Josephs NS Templeraíney	17181B
St. Peters Primary School	18464S
Stratford Lodge NS	19339U
The Glebe NS Wicklow	14398L
Wicklow Educate Together NS	20178G

5.2.3 Non-reporting Public Bodies

The number of public bodies that are required to report in their own right changes from year to year due to organisational changes within the sector. Some smaller organisations that were requested to report for 2015 did not report data in their own right, but their data was reported via 'parent' organisations, while others may no longer come under the definition of a public body, as set out in SI 426 of 2014. Such organisations are not listed here. These organisational changes are the subject of continual review by SEAI.

Alzheimer Society of Ireland
An Foras Teanga - Foras na Gaeilge
Cheshire Ireland
Donegal Education & Training Board
Forensic Science Laboratory
Grangegorman Development Agency
New Ross Port Company
Nua Healthcare Services
Professional Development Service for Teachers
Regulator of the National Lottery
Residential Tenancies Board
State Examinations Commission
Valuation Tribunal

Appendix 1 – Reporting Methodology

The key principles of the reporting methodology are:

- Individual public bodies report annually for the previous year. There is a defined reporting window during which public bodies must report and the cycle repeats annually.
- Public bodies report all of their energy consumption for all fuel types (electricity, thermal fuels and transport fuels) at an organisational level.
- Public bodies report baseline data on a once off basis.
- Public bodies then report their energy consumption annually for the previous year.
- For electricity & natural gas, all public bodies have to do is submit their meter numbers once to the SEAI (MPRNs & GPRNs) and then validate them annually. SEAI accesses the energy consumption data corresponding to these meter numbers directly from the regulated meter operators (ESB MRSO and Gas Networks Ireland) each year.
- For all non-network connected energy sources (e.g. heating oils, LPG, solid fuels, diesel), public bodies self-report their consumption subtotals directly to the SEAI.
- Each year, public bodies must self-report an activity metric that best corresponds with their energy usage.

The next reporting cycle will commence in November 2016. All public bodies will be required to report their 2016 consumption before the cycle ends in late April 2017; they will also have opportunity to review/edit their previously reported data.

Measuring Energy Savings

In order to quantify energy savings, changes in given parameters that are related to energy use must be measured. The SEAI system uses energy performance indicators (EnPIs) to measure each organisation's energy performance. This enables organisations to determine how efficiently they are using energy because it accounts for changes in the activity level related to the energy use – or 'activity metric' – of each organisation.

Each year, an EnPI is calculated by dividing the organisation's total primary energy requirement (TPER) by an activity metric.

The primary indicator for tracking each organisation's energy savings is the change in the organisation's EnPI each year and is expressed as a percentage savings between a baseline period and the current year (i.e. 2015). This is a workable methodology which accounts for an organisation's energy performance as well as its energy consumption and enables public bodies to determine if energy is being used efficiently or not in accordance with the definitions of 'energy efficiency' and 'energy savings' used by the European Commission.

Baselines and Verification

The progress made by an organisation in meeting its 2020 target is measured against a historical baseline. There are three alternative baseline periods. Public bodies can choose whichever of the following baseline periods suits them best: 2001-2005 (averaged); 2006-2008 (averaged); 2009 (single year). 2009 is the default baseline.

Data Verification

The validity of submitted data is checked in two ways:

- Automated Data Verification Assessment (DVA), which consists of validation rules built into the reporting software to check for errors when entering inputs.
- DVAs undertaken by SEAI-appointed assessors, which entail assessments of specific aspects of submissions. A DVA of a public body's submission consists of direct interaction(s) between an SEAI assessor and the public body to verify that the data submitted falls within certain acceptability criteria.

The purpose of the data verification system is threefold:

- Ensure, insofar as practical, that the data which is submitted is robust and verifiable;
- Provide an incentive for organisations to submit accurate data;
- Provide a means for supporting organisations in improving how they gather and submit M&R data and for providing feedback on the M&R system.

The data verification process on the 2015 data involved an assessment of 28% of public bodies.

For more information on
Monitoring and Reporting,
visit www.seai.ie/publicsector
or contact publicsector@seai.ie

SEAI would like to thank the Meter Registration System Operators of ESB Networks, and Gas Networks Ireland for their continued support in providing the data required to measure and monitor energy efficiency.

Appendix 2 – Glossary

Activity Metric

A measure of the activity that a public body undertakes. Ideally, the activity metric should quantify the key activities that affect energy use, e.g. for organisations in which most of the energy consumption is in buildings, good activity metrics are: the total useful floor area that is heated or air conditioned; the number of people that benefit from the energy service provided (e.g. number of employees for office-based organisations, number of students for universities etc.)

Baseline

The period from which an organisation's progress towards the 2020 target is tracked. There are three alternative baselines. Public bodies can choose whichever one suits them best: 2001-2005 (averaged); 2006-2008 (averaged); 2009 (single year). 2009 is the default baseline.

BMS

Building management systems or building energy management systems provide control and monitoring of energy services. With efficient control of energy using plant and equipment, running and maintenance costs can be reduced and comfort levels maintained. Systems can be set up to monitor and report on energy usage, costs and billing.

EnPI

Energy Performance Indicator. (EnPI) is a way of measuring an organisation's energy performance. Each year, an EnPI is calculated by dividing the organisation's total primary energy requirement (TPER) by an activity metric.

GPRN

Gas Point Registration Number is a unique reference number assigned to every gas point on the natural gas network.

LEED

LEED is a national certification system developed by the U.S. Green Building Council to encourage the construction of energy and resource-efficient buildings that are healthy to live in.

MPRN

Meter Point Reference Number is a unique 11-digit number assigned to every single electricity connection and meter in the country.

Public Body

For the purposes of the NEEAP target, public bodies are considered to encompass the Civil Service, commercial and non-commercial State Bodies, State-owned financial institutions, the Defence Forces, An Garda Síochána, Health Service Executive hospitals and other facilities, Local and Regional Authorities, schools and universities.

Thermal Fuels / Thermal Energy

For the purposes of this report, thermal fuels (thermal energy) comprise all solid, liquid and gas fuels used for non-transport purposes. This includes both fossil and renewable fuels used in boilers, space & process heating systems, catering, fuel based electricity generators (on site), CHP and in all plant, equipment & other non-road-mobile vehicles.

TPER

Total Primary Energy Requirement (TPER), or primary energy, is a measure of all of the energy consumed by the organisation, which accounts for the energy that is consumed and/or lost in transformation, transmission and distribution processes. TPER is calculated by applying published conversion factors to each element of the organisation's energy consumption. The conversion factors can vary from year to year and the factor for electricity is typically at least twice the value of those for thermal and transport fuel types.

Conversion factors for each year are available on the Frequently Asked Questions section of SEAI's website http://www.seai.ie/Your_Business/Public_Sector/FAQ/Calculating_Savings_Tracking_Progress/What_are_the_conversion_factors_used_to_calculate_TPER.html

Transport Fuel

For the purposes of this report, transport fuels comprise all liquid fuels used for transport vehicles (road, rail, air, water). This includes both fossil and renewable fuels. The electricity used for transport (rail, electric vehicles) is included within the electricity totals in this report, although an electricity-for-transport subtotal is broken out in Figure 8.



Sustainable Energy Authority of Ireland

Wilton Park House
Wilton Place
Dublin 2
Ireland

t +353 1 808 2100 | e info@seai.ie
f +353 1 808 2002 | w www.seai.ie



The Sustainable Energy Authority of Ireland is partly financed by Ireland's EU Structural Funds Programme co-funded by the Irish Government and the European Union