

CO₂ Emissions from Energy Use in Ireland



To download the full report, visit www.seai.ie/resources/publications

In 2016, the CO₂ emissions intensity of Ireland's energy supply was



32% higher than the OECD European average

due to greater use of high-carbon fuels including

oil, coal and peat



Avoided CO₂ emissions from renewable energy in 2017 was

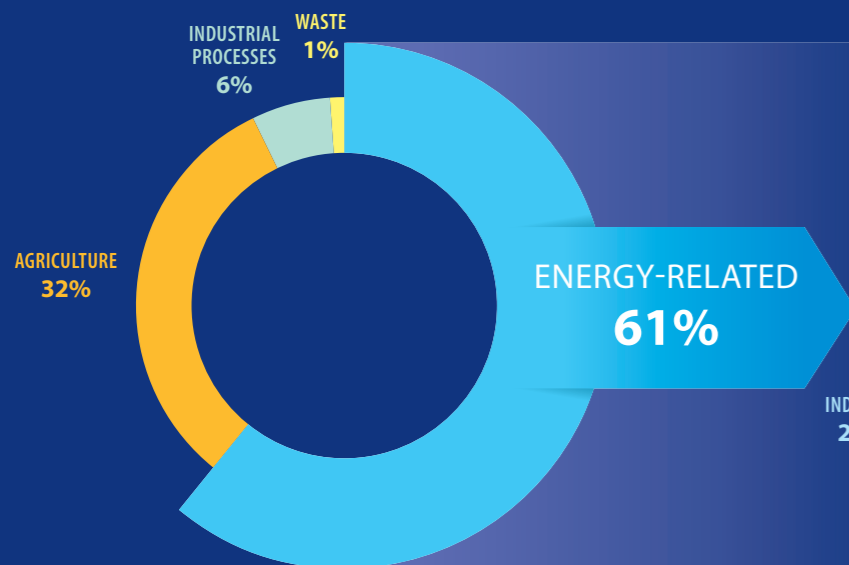


which is **equivalent** to removing

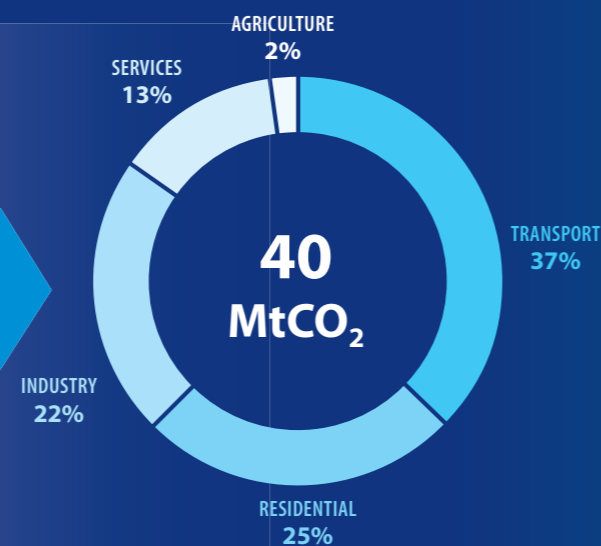
70% of private cars off the road



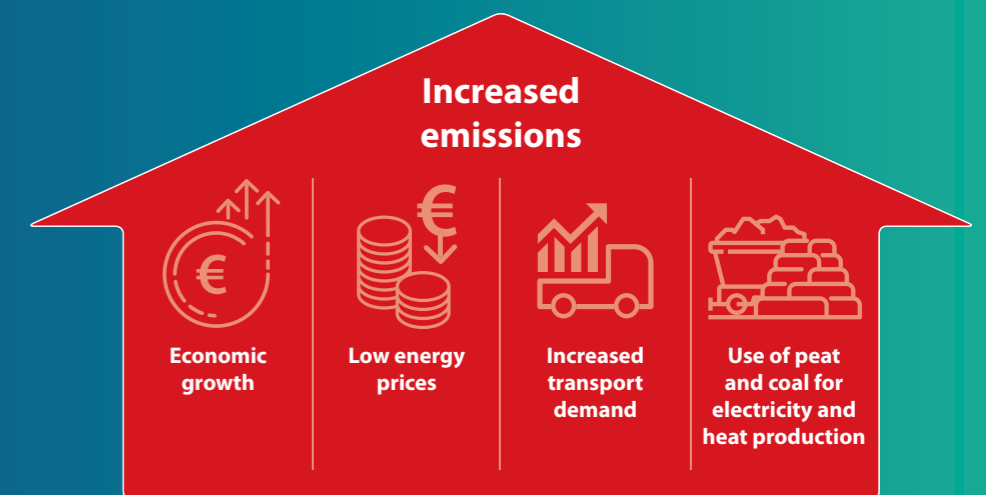
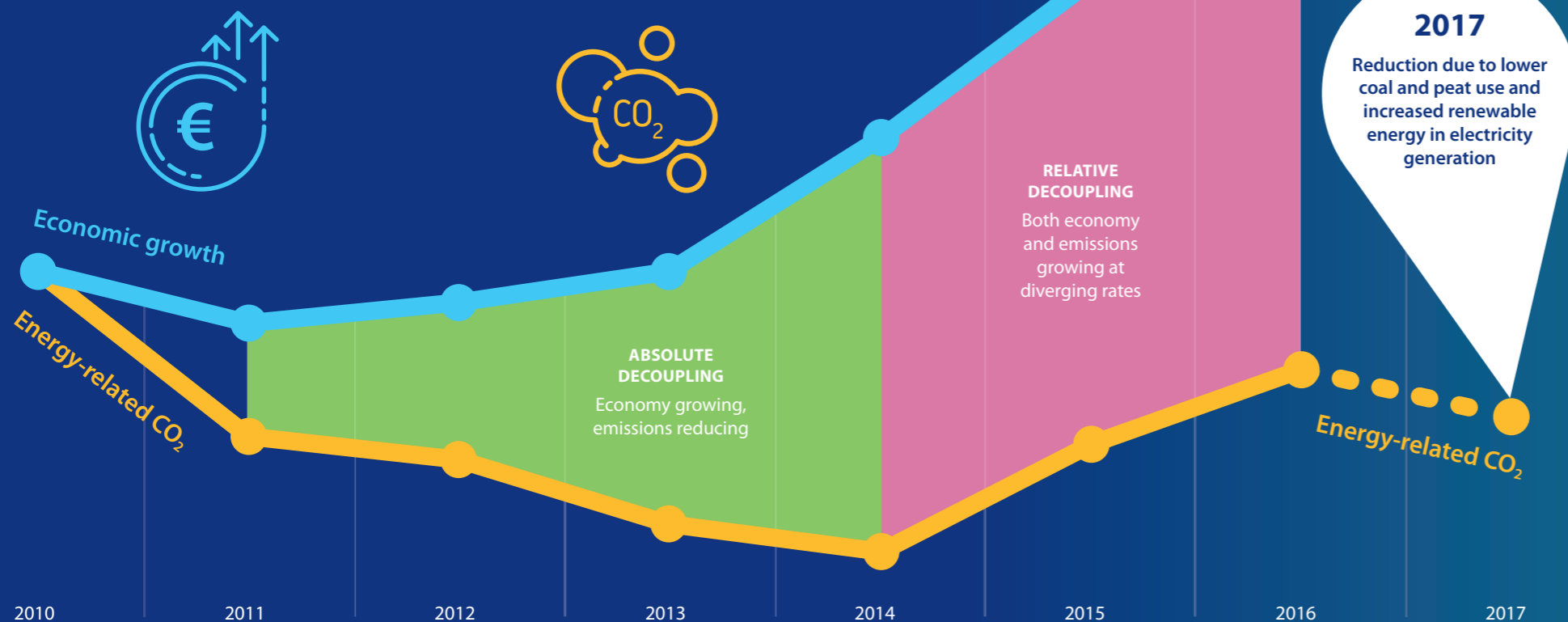
Greenhouse gas emissions by source 2016



Energy-related CO₂ emissions by sector 2016



Economic growth vs Energy-related CO₂



What is driving Ireland's CO₂ emissions?

