

UISCE ÉIREANN

Uisce Éireann, as one of Ireland's largest public sector energy consumers, is continually improving the energy efficiency of water services. In line with Government policy for state bodies, Uisce Éireann has successfully implemented a wide range of energy saving initiatives in recent years, but the company plans to take further action to reduce energy consumption and become even more energy efficient in order to reduce carbon emissions from its operations by 2030.

Uisce Éireann has made significant progress on the journey to become a low carbon, energy efficient, sustainable water utility. Its strategy and energy management programme take a business-wide approach, including energy efficient design, innovation, energy retrofits, renewable energy, lighting and heating, energy audits, planning, process optimisation, staff awareness and training.

The company's strategy follows a structured approach with commitment from Senior Management to develop, improve and sustain a culture of energy efficiency throughout the organisation.



20% reduction in energy
(Winter 2022-23 vs. 2019 baseline)
27% reduction in electricity.
17% reduction in gas.

10 buildings



Heating, cooling and lighting measures

The following measures were implemented in all buildings:

- Turned off heating and utilities outside of building operating hours.
- Reduced the operating hours of the heating, ventilation and air-conditioning equipment.
- Heating, cooling and lighting in meeting rooms is set to 'off' as a default setting.
- Optimised water heating to save energy.



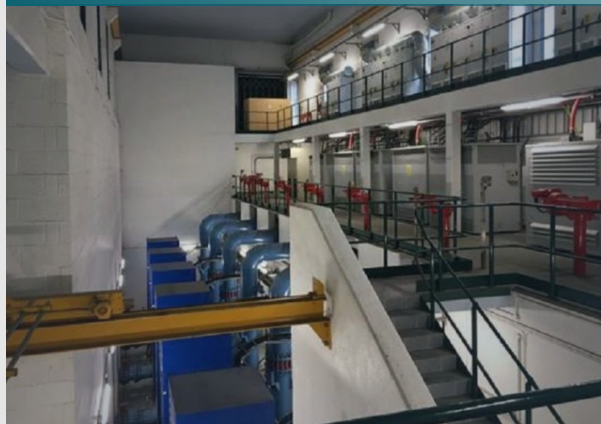
- Reduced unnecessary use of lighting.
- Turned off display lighting/window/feature display lighting between 5 and 7 pm every day in certain buildings.



Control and scheduling measures

The following measures were implemented:

- Ensured that operational control is appropriate to hours of work and services delivered.
- Corresponding with a reduction in occupancy, minimised the space occupied and heated.
- Reduced electricity use at peak times (5 pm-7pm).
- Conducted parasitic load investigations.
- In offices with catering facilities, the catering has been scaled back, based on occupancy, in order to reduce energy.



Facilities assessment measures

The following measures were carried out in all buildings:

- Energy Efficiency assessment or audit completed.
- Operations and Maintenance Audits.
- Out of hours walk-throughs.
- Developed an operational control and measurement process.

